



◆ HERMETO CODEX ◆  
THE PATH OF THE CREATOR



SCROLL

V

THE ETERNAL  
GUARDIANSHIP



# HERMETO CODEX

THE PATH OF THE CREATOR



## SCROLL V

### THE ETERNAL GUARDIANSHIP

#### INDEX

- II. THE VOW OF PERMANENCE.
- III. THE ARCHITECT AS LIVING REFERENCE.
- V. THE DISCIPLINE OF DAILY CARE.
- VI. EVOLUTION WITHOUT BETRAYAL.
- VIII. EXTENDING THE HABITAT.
- X. THE SHIELD OF THE COMMUNITY.
- XI. THE LEGACY OF PRESENCE.
- XIII. THE CONSTANT AMID CHANGE.

◆ THE RIDDLE IS THE FILTER,  
PATIENCE IS THE KEY. ◆

## THE VOW OF PERMANENCE

MOST CREATORS PREPARE FOR DEPARTURE. THE ARCHITECT PREPARES FOR CONTINUITY. PERMANENCE IS NOT STUBBORNNESS. IT IS A CONSCIOUS DECISION TO ACCEPT LONG RESPONSIBILITY OVER SHORT RELIEF. BY REMAINING, THE ARCHITECT DECLARES THAT THE CREATION IS NOT A TRANSACTION, BUT A COMMITMENT.

◆

THIS VOW IS NOT MADE PUBLICLY. IT IS MADE INTERNALLY. ONCE TAKEN, DECISIONS ARE NO LONGER GUIDED BY CONVENIENCE, BUT BY DURABILITY. THE QUESTION IS NO LONGER WHAT BENEFITS THE MOMENT, BUT WHAT PRESERVES COHERENCE OVER TIME. **PERMANENCE** CHANGES HOW EVERY ACTION IS WEIGHED.

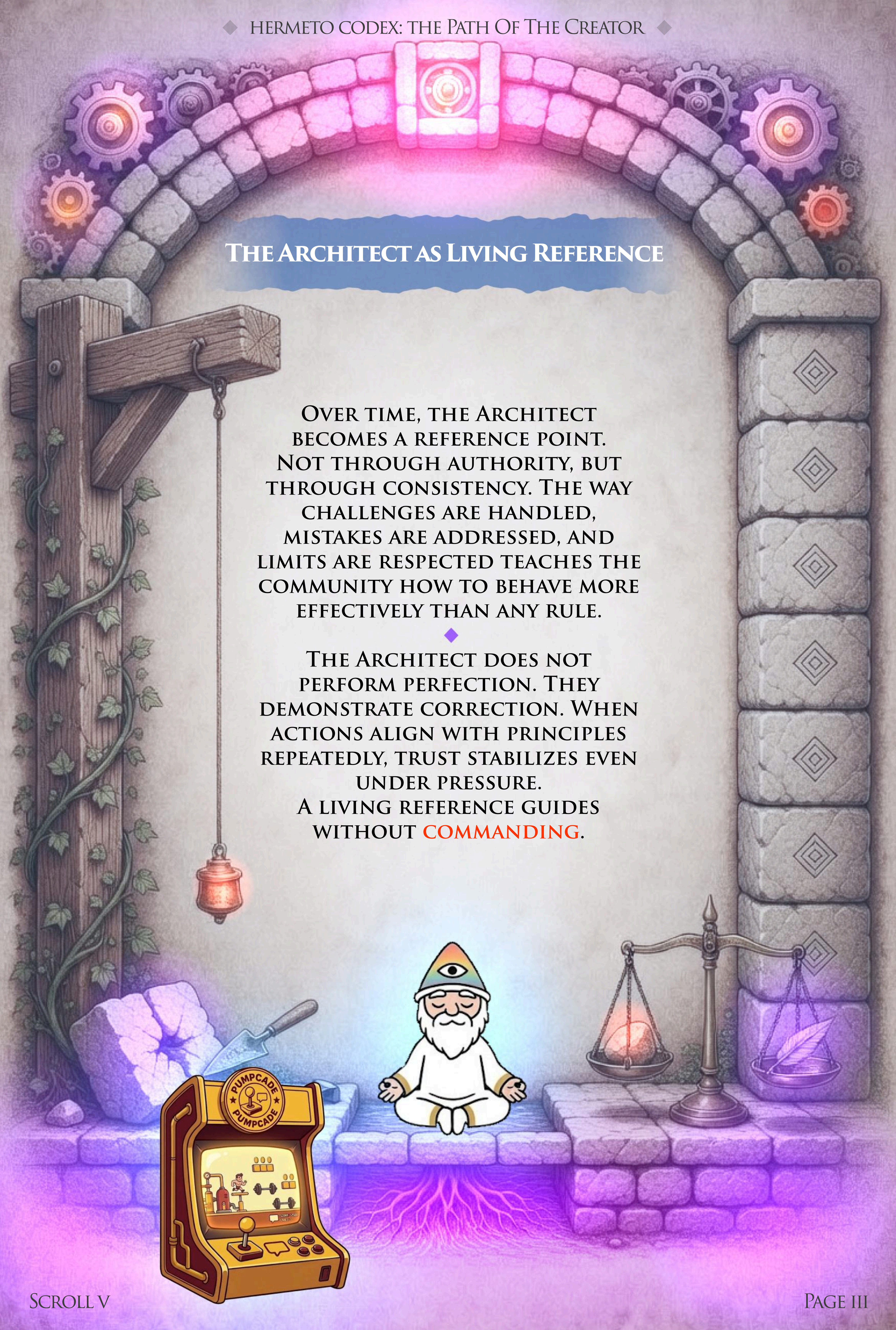


## THE ARCHITECT AS LIVING REFERENCE

OVER TIME, THE ARCHITECT BECOMES A REFERENCE POINT. NOT THROUGH AUTHORITY, BUT THROUGH CONSISTENCY. THE WAY CHALLENGES ARE HANDLED, MISTAKES ARE ADDRESSED, AND LIMITS ARE RESPECTED TEACHES THE COMMUNITY HOW TO BEHAVE MORE EFFECTIVELY THAN ANY RULE.



THE ARCHITECT DOES NOT PERFORM PERFECTION. THEY DEMONSTRATE CORRECTION. WHEN ACTIONS ALIGN WITH PRINCIPLES REPEATEDLY, TRUST STABILIZES EVEN UNDER PRESSURE. A LIVING REFERENCE GUIDES WITHOUT **COMMANDING**.





INTENTIONEM ALLIGA, INFLATIO INEVITABILIS EST.

## THE DISCIPLINE OF DAILY CARE

GUARDIANSHIP IS  
PRACTICED DAILY.  
SMALL ACTS OF  
MAINTENANCE MATTER  
MORE THAN RARE DISPLAYS  
OF AMBITION. CHECKING  
SYSTEMS, RESPONDING  
WITH CLARITY,  
MAINTAINING RHYTHM.  
THESE ACTIONS  
COMPOUND QUIETLY.

◆  
NEGLECT DOES NOT  
ANNOUNCE ITSELF  
IMMEDIATELY. IT  
ACCUMULATES INVISIBLY  
UNTIL FRACTURE APPEARS.  
THE ARCHITECT MUST  
THEREFORE VALUE ROUTINE  
AS A PROTECTIVE FORCE,  
NOT A DISTRACTION FROM  
GROWTH.

WHAT IS CARED FOR  
REGULARLY **RESISTS** DECAY.



The background is a rich, magical illustration. At the top center, a glowing purple diamond contains a bright, multi-colored eye. To its left is a glowing compass with a red needle. To its right is a rolled-up scroll tied with a purple ribbon. Below these elements, a large, glowing eye is set within a complex geometric pattern of white lines. The scene is framed by two stone pillars: the left one is dark with glowing purple gems and vines, while the right one is light-colored with a hanging lantern. At the bottom, a small wizard with a rainbow hat and a white beard stands on a stone platform, surrounded by glowing geometric shapes and energy roots.

## EVOLUTION WITHOUT BETRAYAL

NO CREATION REMAINS STATIC.  
GUARDIANSHIP REQUIRES  
ADAPTATION WITHOUT  
DISTORTION. IMPROVEMENTS MUST  
STRENGTHEN THE ORIGINAL FORM,  
NOT REPLACE IT. CHANGE THAT  
CONTRADICTS THE FOUNDATION  
ERODES TRUST FASTER THAN  
STAGNATION.



THE ARCHITECT EVALUATES  
EVOLUTION CAREFULLY, ASKING  
WHETHER EACH ADJUSTMENT  
CLARIFIES PURPOSE OR  
INTRODUCES CONFUSION.  
GROWTH THAT DEMANDS BETRAYAL  
IS NOT GROWTH.  
CONTINUITY IS PRESERVED BY  
SELECTIVE CHANGE.



SISTE MUNDUM, IMA GEOMETRIAE EME.

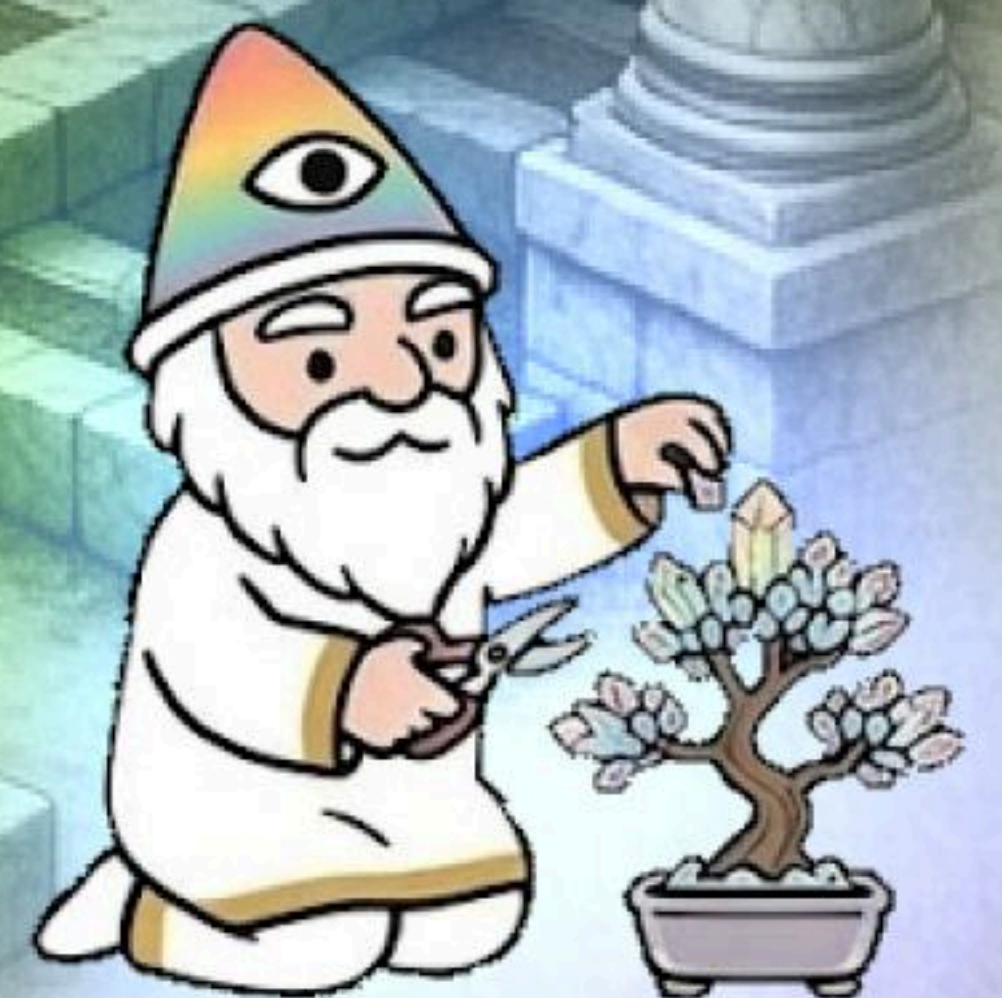
## EXTENDING THE HABITAT

A MATURE CREATION SEEKS NEW ENVIRONMENTS. UTILITIES, INTEGRATIONS, AND EXPANSIONS ARE NOT ESCAPES FROM THE CORE, BUT EXTENSIONS OF IT. EACH NEW DOMAIN MUST BE CAPABLE OF SUSTAINING THE ORIGINAL VALUES WITHOUT CONSTANT SUPERVISION.



THE ARCHITECT EXPANDS ONLY AFTER STABILITY IS DEMONSTRATED. NEW TERRITORY IS ADDED DELIBERATELY, NOT TO CHASE RELEVANCE, BUT TO SUPPORT LONGEVITY.

A CREATION THAT INHABITS MANY SPACES MUST **REMAIN** THE SAME ENTITY IN ALL OF THEM.





UNTIL

NUMERO FIDE, SPIRALIS SEMPER ASCENDIT.



## THE SHIELD OF THE COMMUNITY

GUARDIANSHIP INCLUDES PROTECTION. EXTERNAL PRESSURES, MISINFORMATION, AND PREDATORY BEHAVIOR WILL TEST THE STRUCTURE. THE ARCHITECT DOES NOT RESPOND WITH AGGRESSION, BUT WITH CLARITY AND BOUNDARIES.

◆  
PROTECTION IS NOT CENSORSHIP. IT IS DISCERNMENT. HARMFUL INFLUENCE IS ADDRESSED DIRECTLY. NOISE IS IGNORED. THE COMMUNITY LEARNS WHAT IS TOLERATED BY OBSERVING WHAT IS DEFENDED. A **PROTECTED** STRUCTURE ALLOWS TRUST TO DEEPEN.



## THE LEGACY OF PRESENCE

PRESENCE LEAVES TRACES.  
OVER TIME, CONSISTENT  
BEHAVIOR CREATES A PATTERN  
THAT STABILIZES EVEN IN THE  
ARCHITECT'S ABSENCE. THIS  
PATTERN BECOMES CULTURAL  
MEMORY, GUIDING ACTION  
WITHOUT INSTRUCTION.



THE GOAL OF GUARDIANSHIP  
IS NOT DEPENDENCE, BUT  
RESILIENCE. WHEN THE  
CREATION CONTINUES  
COHERENTLY DURING  
MOMENTS OF REDUCED  
VISIBILITY, THE WORK HAS  
SUCCEEDED.

A LEGACY IS FORMED  
THROUGH PRESENCE  
SUSTAINED LONG ENOUGH TO  
**TEACH.**





# AETHER DUNES

PLEROMA

TWILIGHT WAY

SUNFALLEN  
CRYPT

MIRAGE OASIS

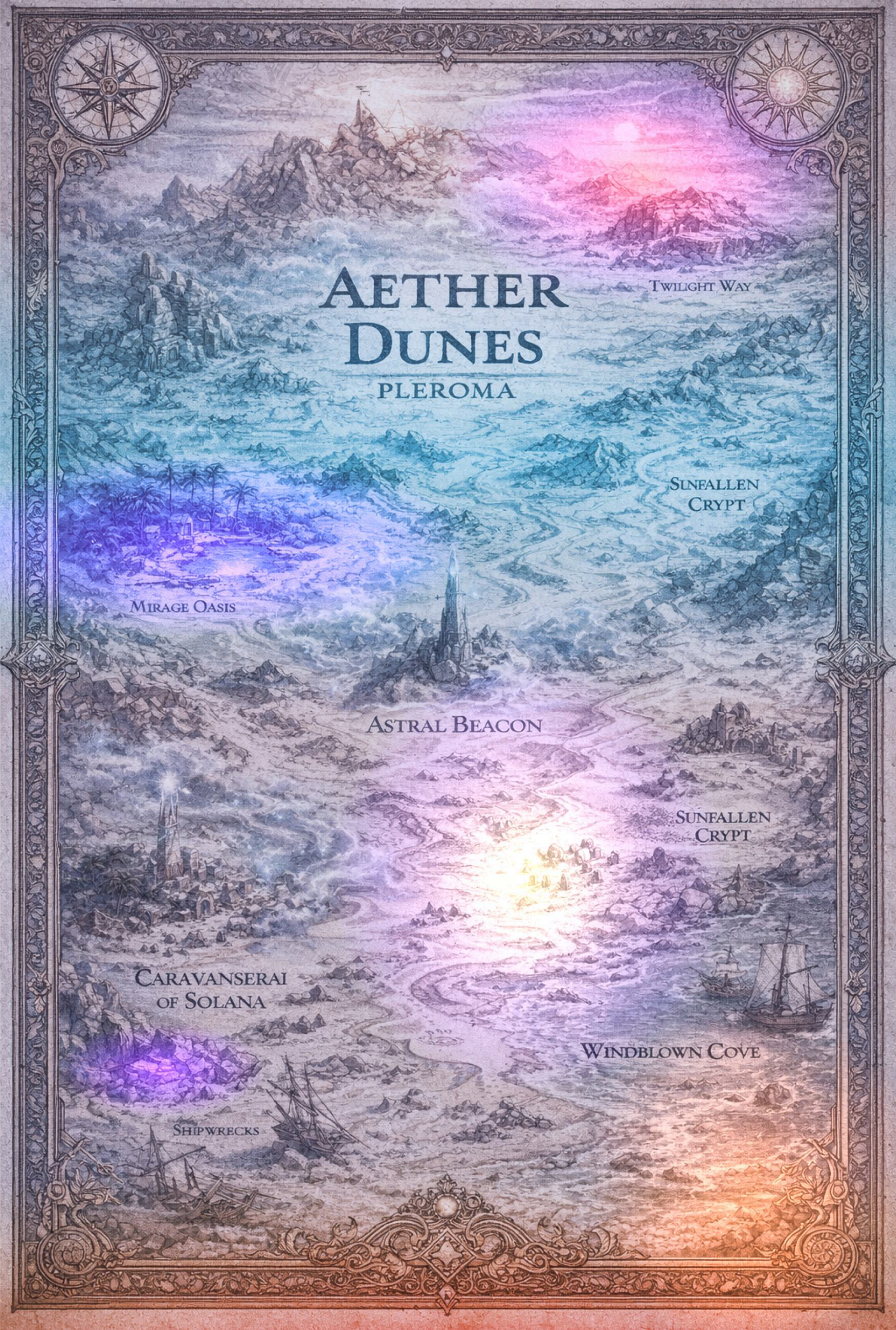
ASTRAL BEACON

SUNFALLEN  
CRYPT

CARAVANSERAI  
OF SOLANA

WINDBLOWN COVE

SHIPWRECKS



## THE CONSTANT AMID CHANGE

MARKETS FLUCTUATE.  
ATTENTION SHIFTS. CONTEXT  
EVOLVES.  
THE ARCHITECT WHO EMBODIES  
GUARDIANSHIP BECOMES A  
CONSTANT WITHIN THIS  
MOVEMENT. NOT IMMOVABLE,  
BUT RELIABLE. NOT LOUD, BUT  
STEADY.

◆  
THIS CONSTANCY ANCHORS  
OTHERS. IT REDUCES FEAR. IT  
ALLOWS LONG-TERM  
ALIGNMENT TO SURVIVE SHORT-  
TERM DISRUPTION.  
TO GUARD IS NOT TO FREEZE  
TIME.  
IT IS TO REMAIN COHERENT  
WHILE **TIME** MOVES.





E N D O F S C R O L L V

