



◆ HERMETO CODEX ◆



THE PATH OF  
THE CREATOR



◆ **HERMETO CODEX** ◆  
THE PATH OF THE CREATOR



**SCROLL**

**I**

◆ ————— ◆  
THE GENESIS  
OF THE SPARK  
◆ ————— ◆



# HERMETO CODEX

THE PATH OF THE CREATOR



## SCROLL I

### THE GENESIS OF THE SPARK

#### INDEX

- II. THE MENTALISM OF THE MEME.
- III. THE ALCHEMICAL TICKER.
- V. THE VISIONARY'S MIRROR.
- VII. CORRESPONDENCE.
- VIII. THE VIRTUE OF ORIGINALITY.
- X. THE ARCHITECT'S SILENCE.
- XI. THE PSYCHIC CONTAGION.
- XIII. THE RITE OF INTENTION.

◆ CREATION BEGINS WHEN INTENT  
STOPS SEEKING PERMISSION ◆

## THE MENTALISM OF THE MEME

BEFORE THE FIRST LINE OF CODE IS WRITTEN, THE TOKEN EXISTS IN THE PLEROMA OF IDEAS. THE ARCHITECT UNDERSTANDS THE FIRST HERMETIC PRINCIPLE: "THE ALL IS MIND." A MEME IS NOT A MERE IMAGE, IT IS A THOUGHT-FORM. IF YOU CREATE FROM A PLACE OF SCARCITY OR A QUICK FLIP MENTALITY, YOU BIRTH A WEAK ENTITY THAT WILL WITHER AT THE FIRST SIGN OF FUD.

TO CREATE A LEGENDARY TOKEN, YOU MUST NOURISH THE IDEA IN THE SILENCE OF YOUR MIND.

SEE THE MEME AS A LIVING SPIRIT SEEKING TO MANIFEST. WHEN YOUR INTENT IS PURE, THE TOKEN IS BORN WITH A STRONG SOUL, MAKING IT **MAGNETIC** TO THE INITIATED.





## THE ALCHEMICAL TICKER

THE TICKER IS THE MANTRA OF YOUR CREATION. IN THE TRENCHES, NAMES ARE FORGOTTEN, BUT TICKERS ARE SHOUTED IN THE DIGITAL STREETS. THE ARCHITECT CHOOSES THE TICKER FOR ITS VIBRATIONAL FREQUENCY. EACH LETTER CARRIES A NUMERICAL WEIGHT THAT CONTRIBUTES TO THE TOKEN'S DESTINY NUMBER.

◆  
WHEN YOU CHOOSE YOUR LETTERS, YOU ENCODE THE RHYTHM OF THE CHART. A TICKER MUST BE EASY TO CHANT, FOR THE COMMUNITY'S "SHILLING" IS A RHYTHMIC RITUAL THAT SUSTAINS THE TOKEN'S ENERGY. IF THE TICKER RESONATES WITH THE HARMONY OF THE PLEROMA, IT WILL CUT THROUGH THE MARKET NOISE LIKE A **GOLDEN** BELL.





INITIUM EST PUNCTUM AETERNUM



## THE VISIONARY'S MIRROR

EVERY CREATOR MUST LOOK INTO THE MIRROR AND ASK: IS THIS TOKEN A GHOST OR A SOUL? A GHOST TOKEN IS A HOLLOW SHELL, BUILT ON THE BONES OF PREVIOUS SUCCESSES, DESTINED TO FADE WHEN HYPE DIES. IT HAS NO UNIQUE VIBRATION. A SOUL TOKEN CARRIES THE ARCHITECT'S UNIQUE ESSENCE, THEIR HUMOR, THEIR PHILOSOPHY, THEIR UNWAVERING WILL.

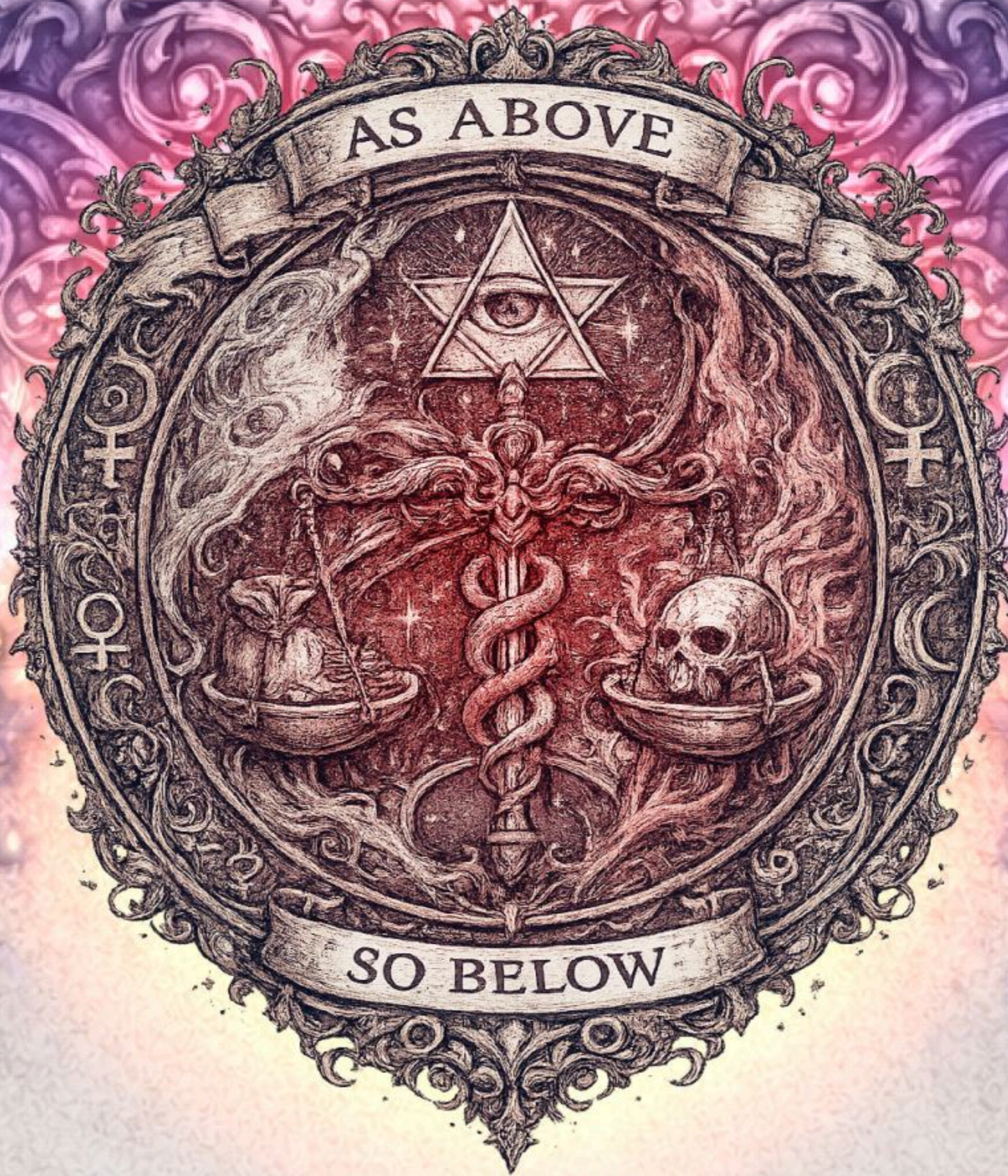


A SOUL TOKEN CREATES ITS OWN GRAVITY. IT DOES NOT NEED TO CHASE INFLUENCERS BECAUSE ITS INTERNAL LIGHT IS TOO BRIGHT TO IGNORE. YOUR JOB IS TO **BREATHE** YOUR OWN LIFE-FORCE INTO THE MEME UNTIL IT CAN STAND ON ITS OWN.





CREATOR FIT DUM CREAT



## CORRESPONDENCE

ACCORDING TO THE PRINCIPLE OF CORRESPONDENCE, THE INTERNAL STATE OF THE CREATOR (AS ABOVE) IS REFLECTED IN THE HOLDERS AND PRICE ACTION (SO BELOW). IF THE ARCHITECT IS ANXIOUS, CHECKING THE CHART WITH FEAR, THE COMMUNITY WILL SENSE THIS VIBRATION AND FUD.

IF THE ARCHITECT IS GREEDY, THE WHALES WILL SMELL THE DECAY. BUT IF THE ARCHITECT REMAINS IN A STATE OF APATHEIA, CALM AND RESOLUTE, THE CHART WILL REFLECT THAT STABILITY. TO FIX A "BLEEDING" CHART, DO NOT LOOK AT THE CODE, LOOK WITHIN. **PURIFY** YOUR INTENT.





# PRISTINUM



## THE VIRTUE OF ORIGINALITY

IN THE TRENCHES, MANY SEEK TO "COPY-PASTE" THE SUCCESS OF OTHERS. THIS IS THE PATH OF ALCHEMICAL LEAD. TRUE GOLD IS FOUND IN ORIGINALITY. WHILE YOU MAY DRAW INSPIRATION FROM THE AETHER, THE ARCHITECT MUST ADD A UNIQUE "SALT", A SPECIFIC FLAVOR OF ART OR CULTURE THAT HAS NEVER BEEN SEEN. DERIVATIVES ARE FRAGILE BECAUSE THEY RELY ON THE VIBRATION OF ANOTHER.



AN ORIGINAL CREATION OWNS ITS OWN FREQUENCY. BY PRESENTING THE MARKET WITH A NEW IDEA, YOU EXPAND THE PLEROMA ITSELF, AND THE UNIVERSE REWARDS THE "FIRST MOVER" WITH THE HIGHEST LEVEL OF ATTRACTION.





SILENTIUM EST INITIUM



SILENTIUM

## THE ARCHITECT'S SILENCE

THE PERIOD BETWEEN THE IDEA AND THE LAUNCH IS THE INCUBATION. DURING THIS TIME, THE ARCHITECT PRACTICES SACRED SILENCE. TO SPEAK TOO EARLY OR TO TOO MANY PEOPLE IS TO LEAK THE "VRIL" (THE LIFE ENERGY) OF THE PROJECT. IF THE IDEA IS EXPOSED TO THE CYNICAL OR THE GREEDY BEFORE IT IS FORTIFIED, THEIR NEGATIVE MENTALISM CAN POLLUTE THE SPARK.



KEEP YOUR WORK HIDDEN UNTIL THE VIBRATION IS SO STABLE THAT NO EXTERNAL FORCE CAN SHAKE IT. THE LAUNCH SHOULD BE LIKE A THUNDERCLAP: A SUDDEN MANIFESTATION OF A FORCE THAT WAS BUILT IN THE QUIET DARK.





## THE PSYCHIC CONTAGION

AT LAUNCH, THE GREATEST ATTACK IS NOT ON THE CODE, BUT ON THE MIND OF THE ARCHITECT.

BAD ACTORS APPEAR AS HELPERS. THEY SPEAK WITH URGENCY, DOUBT, AND FALSE CONCERN. THEIR GOAL IS NOT TO IMPROVE THE CREATION, BUT TO FRACTURE THE ORIGINAL VIBRATION. PANIC IS THEIR VECTOR. REACTION IS THEIR WEAPON.



EVERY IMPULSIVE CHANGE WEAKENS THE MEME'S SOUL. WHAT WAS NOT DECIDED IN SILENCE MUST NOT BE CHANGED IN NOISE. THE LAUNCH IS NOT A DIALOGUE. IT IS A MOMENT OF FIXATION.

THE UNSTEADY MIND LEAKS INSTABILITY INTO THE CHART.

THE STEADY MIND ANCHORS REALITY. GUARD YOUR ATTENTION MORE FIERCELY THAN YOUR LIQUIDITY.

FOR WHEN THE ARCHITECT WAVERS, THE MEME TREMBLES.





**IGNIS INTERNUS VIAM APERIT**



## THE RITE OF INTENTION

THE FINAL PAGE OF THE FIRST SCROLL DEMANDS AN HONEST ANSWER: WHY ARE YOU HERE? IF YOUR ONLY INTENT IS TO TAKE FROM THE MARKET, YOU ARE A PARASITE, AND THE LAW OF RECIPROCITY WILL EVENTUALLY ENSURE YOUR RUIN. BUT IF YOUR INTENT IS TO PROVIDE VALUE, TO CREATE LAUGHTER, TO BUILD A SANCTUARY, OR TO PROVE A TRUTH, YOU ARE A DEMIURGE.



THE RITE OF INTENTION IS A MENTAL CONTRACT YOU SIGN WITH THE UNIVERSE. WHEN YOUR GOAL IS THE "GREAT WORK" OF A LASTING MEME, THE PLEROMA PROVIDES THE ENERGY. THE ARCHITECT WHO CREATES TO GIVE IS THE ONLY ONE WHO TRULY RECEIVES.



E N D O F S C R O L L I





◆ **HERMETO CODEX** ◆  
THE PATH OF THE CREATOR



**SCROLL**

**II**

◆ ————— ◆  
THE GEOMETRY  
OF THE CONTRACT  
◆ ————— ◆



# HERMETO CODEX

THE PATH OF THE CREATOR



## SCROLL II

# THE GEOMETRY OF THE CONTRACT

### INDEX

- II. THE LAWS OF CIRCULATION.
- III. THE MOMENT OF COMMITMENT.
- V. THE DISCIPLINE OF ANCHORING.
- VI. THE LAW OF SACRIFICE.
- VIII. THE PRACTICE OF CLEAN INTENT.
- X. THE MEASURE OF THE CREATOR.
- XI. THE DISCIPLINE OF NON-INTERFERENCE.
- XIII. THE LAW OF EXPANSION.

◆ THE CREATOR IS BORN  
BEFORE THE WORK. ◆



## THE LAWS OF CIRCULATION

EVERY LIVING CREATION REQUIRES  
MOVEMENT.

ENERGY MUST CIRCULATE WITH PURPOSE.  
ACCUMULATION WITHOUT FUNCTION TURNS  
INTO VICE. DISTRIBUTION WITHOUT  
DISCIPLINE DISSOLVES STRENGTH.

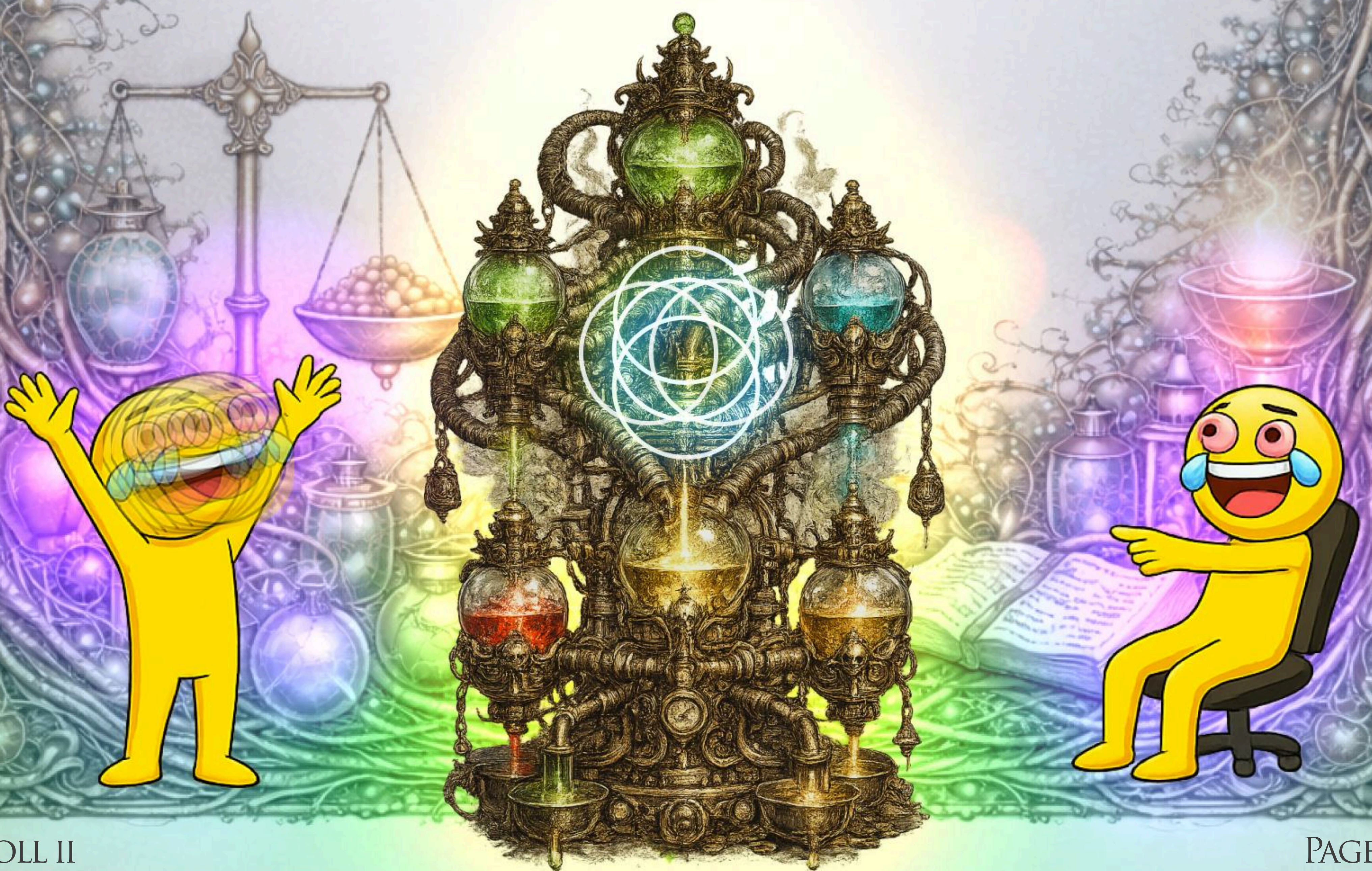


THE ARCHITECT DESIGNS CIRCULATION  
CONSCIOUSLY:

WHAT IS SUSTAINED  
WHAT IS REINFORCED  
WHAT IS PROTECTED

THE ARCHITECT UNDERSTANDS THAT EXCESS  
AND DEFICIENCY ARE EQUALLY DESTRUCTIVE.  
HE MUST KNOW THAT WHAT DOES NOT  
CIRCULATE DECAYS.

TRANSPARENCY IS NOT MARKETING.  
IT IS MORAL **HYGIENE**.





## THE MOMENT OF COMMITMENT

EVERY CREATION REACHES A POINT WHERE PREPARATION ENDS. BEFORE THIS MOMENT, THE ARCHITECT CAN REVISE, IMAGINE, AND DELAY. AFTER IT, EVERY DECISION PRODUCES CONSEQUENCE. THIS THRESHOLD MUST BE RECOGNIZED CLEARLY, BECAUSE CONFUSION HERE BECOMES WEAKNESS LATER.



COMMITMENT IS NOT EXCITEMENT OR CONFIDENCE. IT IS THE DECISION TO MOVE FORWARD WITHOUT WAITING FOR CONFIRMATION. ONCE THE FORM IS FIXED, DOUBT MUST NO LONGER BE CONSULTED.

THE ARCHITECT UNDERSTANDS THAT CERTAINTY DOES NOT PRECEDE ACTION. IT IS FORMED BY ACTION. TO HESITATE AFTER COMMITTING IS TO FRACTURE THE FOUNDATION AT BIRTH. IF YOU ARE STILL NEGOTIATING INTERNALLY, YOU ARE NOT READY TO BIND REALITY.

ONLY WHAT IS CHOSEN WITHOUT INNER RESISTANCE CAN **ENDURE** PRESSURE.





CREATOR ANTE OPUS NASCITUR

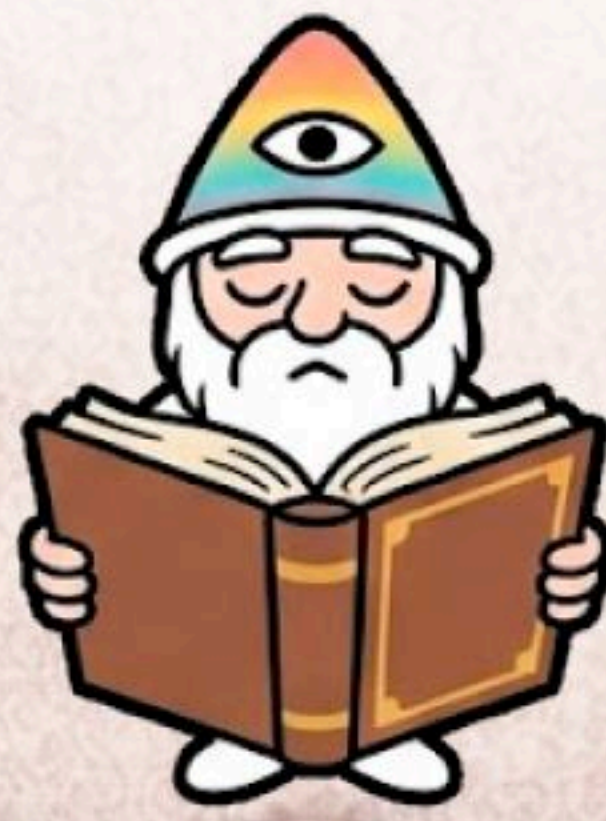
## THE DISCIPLINE OF ANCHORING

AN IDEA WITHOUT ANCHORING IS  
AN EXCUSE.

TO ANCHOR IS TO ACCEPT  
FRICTION, TIME, AND RESISTANCE.  
IT IS TO DECLARE THAT THIS IS  
NOT AN EMOTIONAL EXPERIMENT,  
BUT A REAL CONSTRUCTION.  
THE SERIOUS ARCHITECT DOES  
NOT LEAVE EVERY EXIT OPEN.  
THEY CHOOSE TO REMAIN.

THE STOIC DOES NOT FLEE FROM  
WEIGHT.

THE HERMETIST KNOWS THAT  
WITHOUT GRAVITY, NOTHING  
MANIFESTS.  
ANCHORING IS AN ETHICAL ACT.  
IT TELLS OTHERS THIS **CREATION**  
WILL NOT VANISH AT THE FIRST  
DIFFICULTY.





## THE LAW OF SACRIFICE

EVERY ENDURING FORM REQUIRES  
RENUNCIATION.  
SACRIFICE IS NOT SPECTACLE. IT IS  
THE REMOVAL OF WHAT IS  
UNNECESSARY SO THAT WHAT  
MATTERS CAN SURVIVE. WHAT IS  
SACRIFICED CANNOT BE RECLAIMED  
AS FUTURE TEMPTATION.  
THE IMMATURE SEEK TO KEEP ALL  
OPTIONS OPEN.



THE WISE CLOSE DOORS  
DELIBERATELY.



THE STOIC TRAINS THROUGH  
VOLUNTARY LOSS.



THE PUMPSTLE KNOWS THAT ALL  
TRANSMUTATION REQUIRES FIRE.



IF IT COSTS NOTHING,  
IT MEANS **NOTHING**.





FORMA SEQUITUR VOLUNTATEM



## THE PRACTICE OF CLEAN INTENT

MOST BETRAYALS BEGIN HIDDEN, NOT THROUGH TECHNICAL COMPLEXITY, BUT THROUGH A LACK OF INNER RECTITUDE. BEFORE FIXING ANY RULE, THE ARCHITECT MUST PAUSE AND ASK WHETHER THEY WOULD BE WILLING TO EXPLAIN THIS DECISION OPENLY, WITHOUT JUSTIFICATION OR DISGUISE. IF THE ANSWER IS NO, THE STRUCTURE IS ALREADY COMPROMISED.

◆

ETHICS ARE NOT SOMETHING VERIFIED LATER, ONCE CONSEQUENCES APPEAR. THEY ARE DECIDED IN ADVANCE, AT THE MOMENT OF COMMITMENT, WHEN TEMPTATION IS STILL THEORETICAL AND CLARITY IS POSSIBLE. WHAT IS CONCEALED AT THE BEGINNING ALWAYS RESURFACES UNDER PRESSURE, BECAUSE SYSTEMS REVEAL THE INTENT EMBEDDED IN THEM.

◆

THE ARCHITECT MUST ACT IN WAYS THAT CAN BE DEFENDED WHEN CHALLENGED, WITHOUT ANGER OR EVASION. EVERY CAUSE RETURNS, WHETHER ACKNOWLEDGED OR IGNORED. WHAT YOU ARE UNWILLING TO STAND BEHIND SHOULD NOT BE BUILT INTO THE FOUNDATION, BECAUSE THE FOUNDATION WILL EVENTUALLY DEMAND **ACCOUNTABILITY.**





IGNIS INTERNUS VIAM APERIT



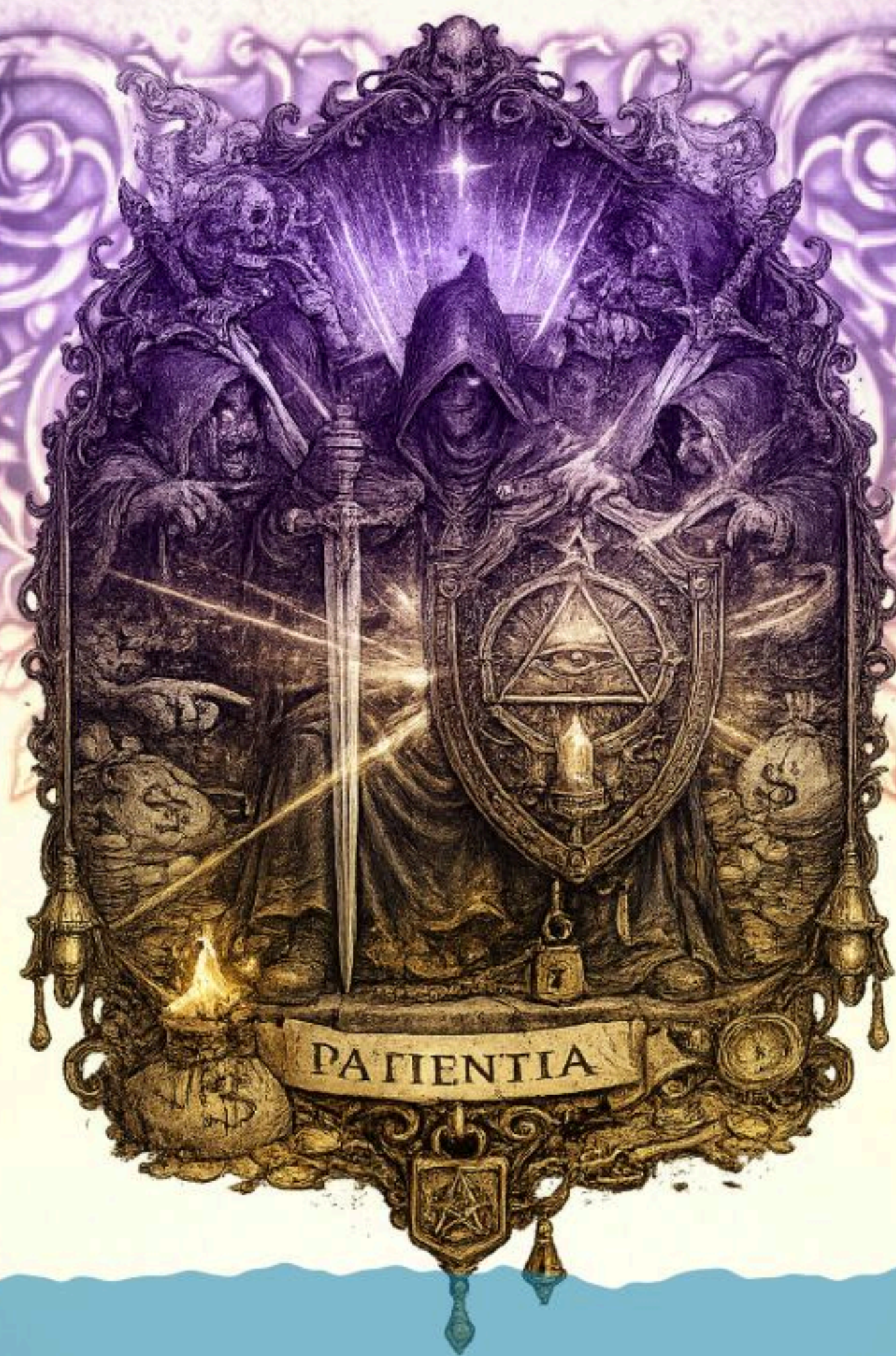
## THE MEASURE OF THE CREATOR

THE CREATOR MUST ALSO BE BOUND BY THE STRUCTURE THEY CREATE. THE LIMITS IMPOSED ON THE SYSTEM MUST BE REFLECTED IN PERSONAL CONDUCT, BECAUSE COHERENCE BETWEEN ACTION AND ARCHITECTURE IS WHAT SUSTAINS TRUST. WHEN THE CREATOR LACKS TEMPERANCE, THE STRUCTURE WEAKENS, REGARDLESS OF HOW WELL DESIGNED IT APPEARS.



DISCIPLINE IS NOT MORAL DISPLAY, BUT STRUCTURAL NECESSITY. THE CREATOR WHO GOVERNS THEIR IMPULSES PRESERVES SYMMETRY BETWEEN THEMSELVES AND THE SYSTEM. THE CREATOR WHO DOES NOT BECOMES THE WEAKEST POINT, INTRODUCING INSTABILITY WHERE NONE WAS **REQUIRED**.





## THE DISCIPLINE OF NON-INTERFERENCE

AFTER FORM IS ESTABLISHED, RESTRAINT BECOMES ESSENTIAL. ONE OF THE MOST COMMON FAILURES OF THE ARCHITECT IS EXCESSIVE INTERVENTION. CONSTANT ADJUSTMENT, REACTION, AND CORRECTION SIGNAL INSECURITY AND SLOWLY ERODE COHERENCE.



NOT EVERY DISTURBANCE REQUIRES ACTION. NOT EVERY VOICE DESERVES RESPONSE. THE ARCHITECT MUST LEARN TO DISTINGUISH BETWEEN STRUCTURAL THREATS AND BACKGROUND NOISE. INTERVENTION IS JUSTIFIED ONLY WHEN IT PRESERVES THE ORIGINAL FORM. ACTION TAKEN TO CALM ANXIETY OR APPEASE PRESSURE WEAKENS THE CREATION INSTEAD OF PROTECTING IT. SILENCE, DELAY, AND PATIENCE ARE FORMS OF CONTROL. REACTION IS OFTEN THE FIRST STEP TOWARD **INSTABILITY**.



# PLEROMA

MEMENIA

FORESTS OF PLEROMA

NORTH VALLEY

SOMNIA  
GLEN

WHISPERWILL  
THICKET

THE SILENT  
PLATEAUS

TEMPLE OF  
CORRESPONDENCE

AETHER  
DUNES

*Inner  
Sea of Mind*

THE ETHERIC OCEAN





## THE LAW OF EXPANSION

NOTHING SHOULD EXPAND BEFORE IT IS STABLE.  
IMPATIENCE DESTROYS MORE CREATIONS THAN MALICE,  
BECAUSE IT MULTIPLIES WEAKNESS INSTEAD OF RESOLVING IT.  
WHEN AN UNSTABLE FORM IS REPLICATED, ERROR SPREADS  
FASTER THAN CORRECTION.

THE ARCHITECT WAITS FOR SIGNS OF COHERENCE BEFORE  
ADVANCING: EMOTIONAL STABILITY IN DECISION-MAKING, A  
SUSTAINED AND NATURAL RHYTHM OF PARTICIPATION, AND  
TRUST THAT ARISES ORGANICALLY RATHER THAN THROUGH  
PRESSURE OR PERSUASION. THESE SIGNALS CANNOT BE  
FORCED AND CANNOT BE SIMULATED FOR LONG.

EXPANSION IS NOT AN ACT OF  
AMBITION, BUT A CONSEQUENCE  
OF SOUND FORM. WHEN THE  
STRUCTURE HOLDS UNDER  
PRESSURE, GROWTH OCCURS  
WITHOUT EFFORT, BECAUSE WHAT  
IS COHERENT NATURALLY SEEKS  
CONTINUATION.





E N D O F S C R O L L I I





◆ HERMETO CODEX ◆  
THE PATH OF THE CREATOR



SCROLL

III

THE BREATH  
OF LIFE



# HERMETO CODEX

THE PATH OF THE CREATOR



## SCROLL III

### THE BREATH OF LIFE

#### INDEX

- II. THE FIRST HOLDERS.
- III. THE CULTURE IS LEARNED.
- V. WHEN THE COMMUNITY IS SILENT.
- VI. THE WEIGHT OF EXPECTATION.
- VIII. CORRECTION WITHOUT HUMILIATION.
- X. THE REWARD OF LOYALTY.
- XI. THE MIRROR OF CONDUCT.
- XIII. THE BREATH SUSTAINED.

◆ THE ARCHITECT PROVIDES THE FORM,  
THE COMMUNITY PROVIDES THE BREATH. ◆



## THE FIRST HOLDERS

THE FIRST HOLDERS ARE NOT AN AUDIENCE, THEY ARE WITNESSES. THEY OBSERVE THE ARCHITECT BEFORE THEY BELIEVE THE STRUCTURE. THEIR BEHAVIOR WILL MIRROR WHAT THEY SENSE AT THE BEGINNING.



THE ARCHITECT MUST NOT SEEK NUMBERS, BUT ALIGNMENT. TEN COHERENT HOLDERS ARE STRONGER THAN A THOUSAND DISTRACTED ONES. EARLY PARTICIPANTS SET THE EMOTIONAL TEMPERATURE OF EVERYTHING THAT FOLLOWS. TREAT THE FIRST HOLDERS AS PARTNERS IN FORMATION, NOT INSTRUMENTS OF MOMENTUM. THE WAY THEY ARE ADDRESSED BECOMES THE **LANGUAGE** OF THE CULTURE.





## THE CULTURE IS LEARNED

COMMUNITY DOES NOT APPEAR FULLY FORMED. IT LEARNS.

MEMBERS STUDY TONE, REACTION, PRIORITIES, AND BOUNDARIES. THEY DO NOT ONLY READ ANNOUNCEMENTS; THEY OBSERVE CONDUCT. WHAT THE ARCHITECT TOLERATES BECOMES STANDARD.



WHAT THE ARCHITECT REWARDS BECOMES IDENTITY.

IF IMPATIENCE IS ENCOURAGED, IMPATIENCE MULTIPLIES. IF STEADINESS IS DEMONSTRATED, STEADINESS SPREADS. CULTURE IS NOT DECLARED. IT IS ABSORBED.

THE ARCHITECT MUST UNDERSTAND THAT EVERY INTERACTION IS INSTRUCTIONAL.

COMMUNITY REFLECTS BEHAVIOR **BEFORE** IT REFLECTS VISION.





NIHIL CREATUR SINE INTENTIONE



## WHEN THE COMMUNITY IS SILENT

THERE WILL BE MOMENTS WHEN THE  
COMMUNITY DOES NOT RESPOND.  
ENGAGEMENT SLOWS. MESSAGES RECEIVE  
LITTLE REACTION. ENERGY APPEARS LOW.  
THE IMMATURE CREATOR INTERPRETS SILENCE  
AS REJECTION. THE DISCIPLINED ARCHITECT  
INTERPRETS IT AS A PHASE.  
COMMUNITY RHYTHM IS NOT CONSTANT.  
IT MOVES IN CYCLES.



EXPECTING PERPETUAL ENTHUSIASM CREATES  
FRUSTRATION AND REACTIVE BEHAVIOR.  
SILENCE IS NOT COLLAPSE.  
IT IS CONSOLIDATION.  
THE WAY TO HEAL QUIET PHASES IS NOT  
THROUGH NOISE, BUT THROUGH EXAMPLE.  
CONTINUE BUILDING.  
CONTINUE SHOWING UP.  
CONTINUE ACTING WITH COHERENCE.  
CONSISTENCY RESTORES MOVEMENT FASTER  
THAN STIMULATION.  
COMMUNITY CONFIDENCE RETURNS WHEN  
STABILITY IS VISIBLE.





## THE WEIGHT OF EXPECTATION

AS THE COMMUNITY GROWS, EXPECTATIONS INCREASE. MEMBERS WILL PROJECT THEIR HOPES, FEARS, AND PERSONAL TIMELINES ONTO THE CREATION. THE ARCHITECT MUST NOT ABSORB ALL OF THIS PRESSURE. A STRUCTURE BUILT ON REACTION BECOMES UNSTABLE.

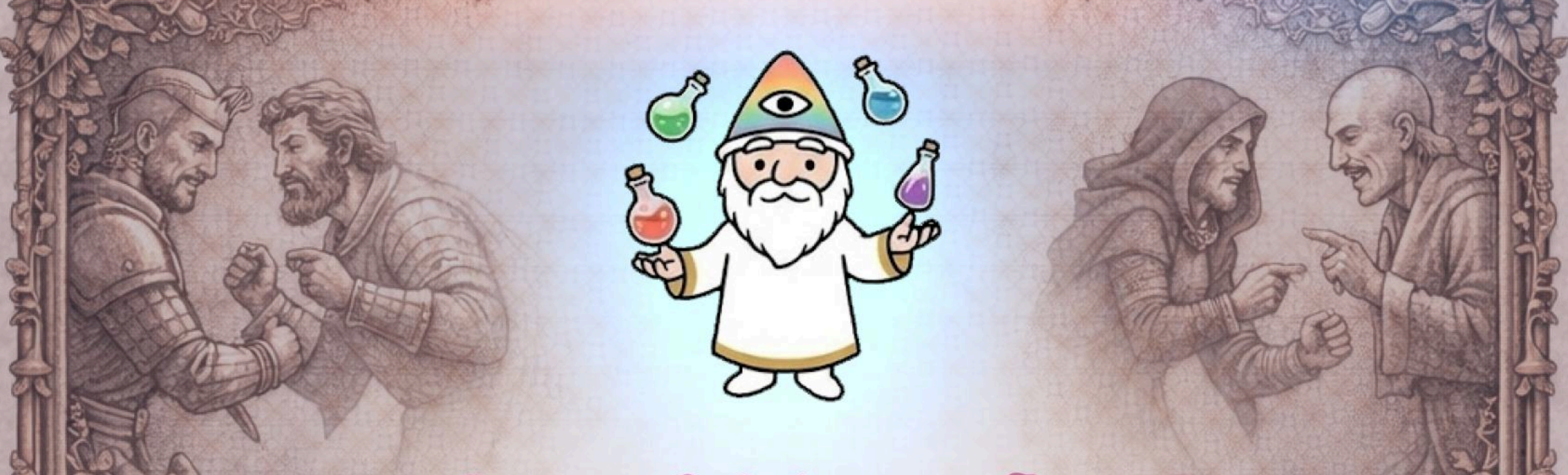
◆

IT IS NECESSARY TO DEFINE WHAT THE CREATION IS RESPONSIBLE FOR, AND WHAT IT IS NOT. WITHOUT BOUNDARIES, THE COMMUNITY BEGINS TO TREAT THE ARCHITECT AS A CONSTANT RESPONDER INSTEAD OF A STEADY REFERENCE. EXPECTATION MUST BE MANAGED THROUGH **CLARITY**, NOT APPEASEMENT.





CREATOR FIT DUM CREAT



## CORRECTION WITHOUT HUMILIATION

COMMUNITIES AND ARCHITECTS INEVITABLY MAKES MISTAKES.  
CONFLICTS ARISE. MISINFORMATION SPREADS.  
EMOTIONS ESCALATE. THE ARCHITECT MUST CORRECT  
BEHAVIOR WITHOUT HUMILIATING INDIVIDUALS.  
PUBLIC SHAMING WEAKENS COHESION. SILENCE IN THE FACE  
OF HARM WEAKENS ORDER.



CORRECTION SHOULD CLARIFY PRINCIPLES, NOT PUNISH  
IDENTITY. WHEN MEMBERS UNDERSTAND WHY SOMETHING IS  
ADJUSTED, ALIGNMENT INCREASES.  
AUTHORITY EXERCISED CALMLY  
STRENGTHENS **UNITY**.





CREATOR FIT DUM CREAT

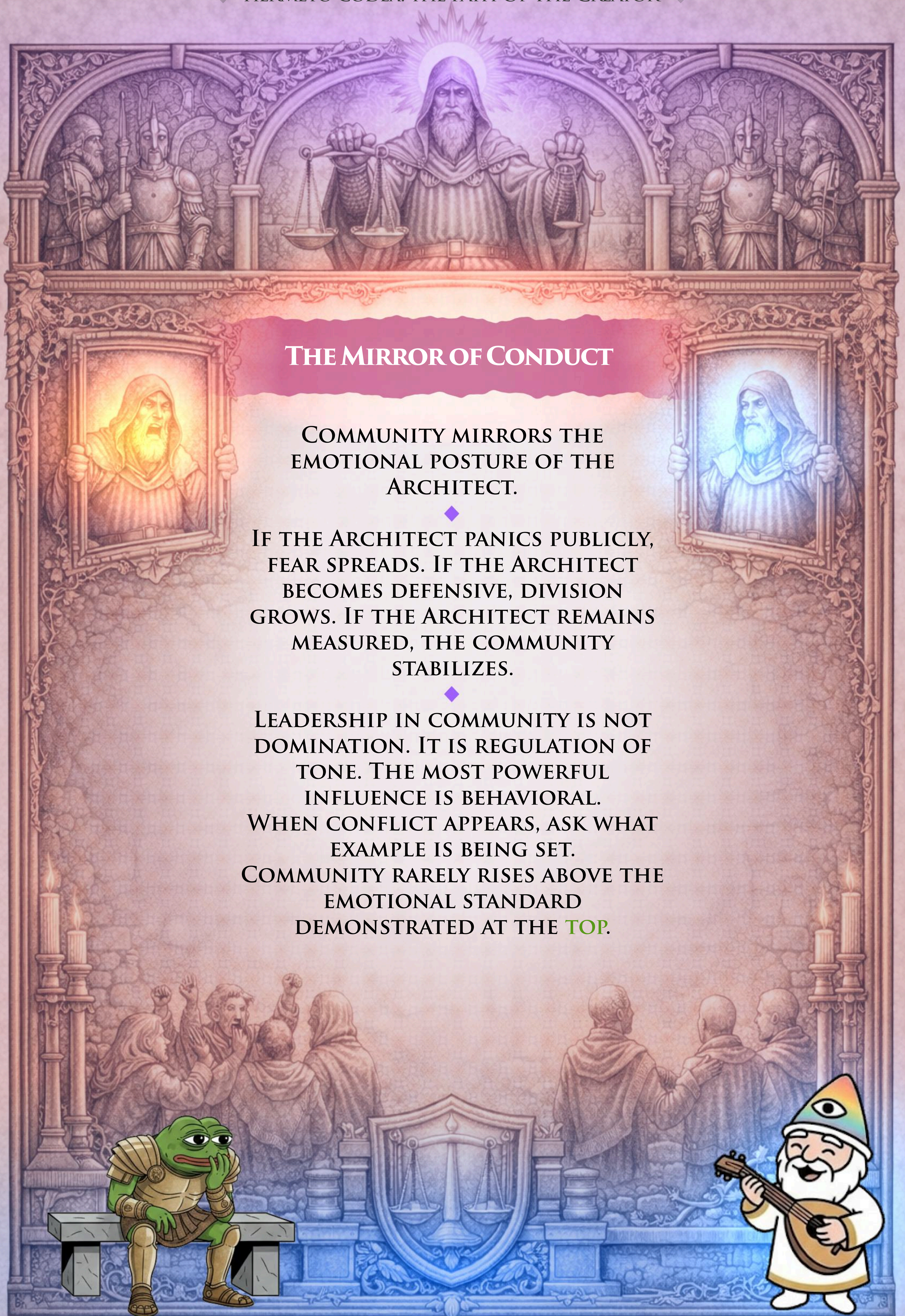


## THE REWARD OF LOYALTY

LOYALTY IS NOT PURCHASED. IT IS CULTIVATED.  
INCENTIVES MUST REINFORCE LONG-TERM  
BEHAVIOR, NOT SHORT-TERM OPPORTUNISM.  
REWARDS THAT FAVOR PATIENCE STRENGTHEN  
CULTURE. REWARDS THAT FAVOR SPEED  
WEAKEN IT.



THE ARCHITECT MUST BE PRECISE AND  
RESTRAINED WHEN DISTRIBUTING VALUE.  
EVERY REWARD TEACHES THE COMMUNITY  
WHAT IS VALUED.  
WHAT IS REWARDED REPEATEDLY BECOMES  
IDENTITY.



## THE MIRROR OF CONDUCT

COMMUNITY MIRRORS THE EMOTIONAL POSTURE OF THE ARCHITECT.

◆  
IF THE ARCHITECT PANICS PUBLICLY, FEAR SPREADS. IF THE ARCHITECT BECOMES DEFENSIVE, DIVISION GROWS. IF THE ARCHITECT REMAINS MEASURED, THE COMMUNITY STABILIZES.

◆  
LEADERSHIP IN COMMUNITY IS NOT DOMINATION. IT IS REGULATION OF TONE. THE MOST POWERFUL INFLUENCE IS BEHAVIORAL. WHEN CONFLICT APPEARS, ASK WHAT EXAMPLE IS BEING SET. COMMUNITY RARELY RISES ABOVE THE EMOTIONAL STANDARD DEMONSTRATED AT THE **TOP**.

# MEMENIA

PLEROMA

SILVERWIND KEEP

PLAINS OF  
REMEMBRANCE

THE OBELISK  
OF ECHOES

WHISPERGRAIN  
FIELDS

MEMORY CLIFFS

THE INNER BASIN  
OF RECALL

THE EMBER VAULT

THIRTY-DAY CROSSING

TUNNEL OF  
FORGOTTEN NAMES

WITHIN MEMORY, *the* KINGDOM BREATHES





## THE BREATH SUSTAINED

A LIVING CREATION BREATHES  
IN AND OUT.  
NEW PARTICIPANTS ARRIVE.  
OTHERS LEAVE. THIS IS  
NATURAL. WHAT MATTERS IS  
WHETHER THE CORE REMAINS  
COHERENT AND THE PURPOSE  
INTACT.



THE ARCHITECT SUSTAINS THE  
BREATH THROUGH PRESENCE,  
CLARITY, AND RESTRAINT. NOT  
BY CONTROL, BUT BY EXAMPLE.  
WHEN THE CULTURE IS SOUND,  
THE CREATION CONTINUES  
EVEN IN MOMENTS OF REDUCED  
ATTENTION.  
AT THIS STAGE, THE ARCHITECT  
NO LONGER ANIMATES EVERY  
MOVEMENT. THEY ENSURE THE  
CONDITIONS FOR LIFE REMAIN  
**STABLE.**





E N D O F S C R O L L I I I





SCROLL

IV

THE LAW OF THE  
THIRTY DAYS



# HERMETO CODEX

THE PATH OF THE CREATOR



## SCROLL IV

### THE LAW OF THE THIRTY DAYS

#### INDEX

- II. THE FIRST TWENTY-FOUR HOURS.
- III. THE SECOND WEEK.
- V. THE WEIGHT OF CONSISTENCY.
- VI. THE THIRTIETH SUN.
- VIII. PRESENCE WITHOUT NOISE.
- X. THE SACRIFICE OF IMMEDIATE REWARD.
- XI. HOLDING THE LINE ALONE.
- XIII. FROM SURVIVAL TO CONTINUITY.

◆ GENTLE VIBRATION OVERCOMES THE HARDEST RESISTANCE OF THE CHART ◆

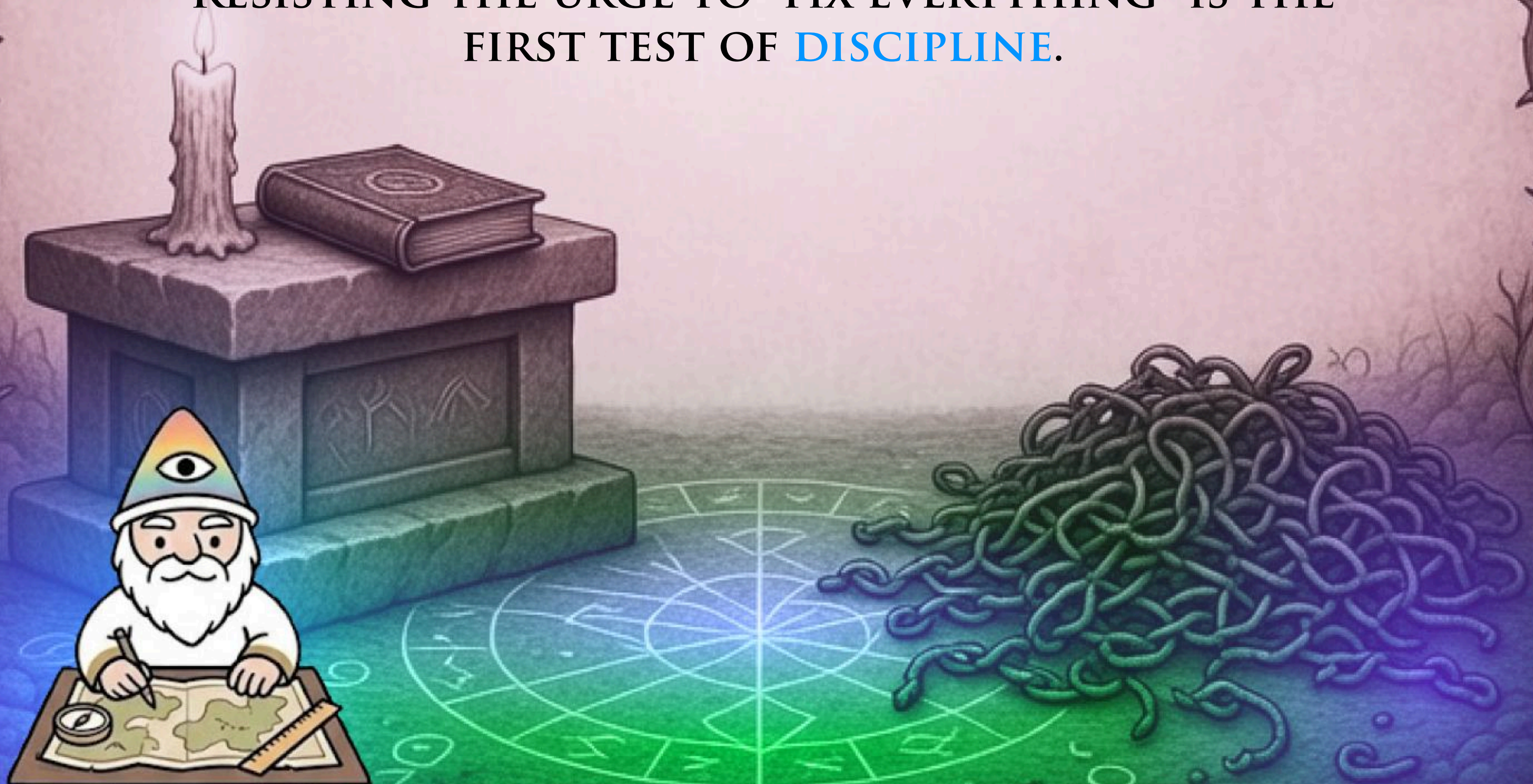


## THE FIRST TWENTY-FOUR HOURS

THE FIRST DAY IS NOT A VERDICT. IT IS A SHOCK. EMOTION IS AMPLIFIED, ATTENTION IS DISTORTED, AND NOISE OVERWHELMS JUDGMENT. THE ARCHITECT MUST UNDERSTAND THAT NOTHING MEANINGFUL CAN BE CONCLUDED DURING THIS PHASE. DECISIONS MADE HERE ARE ALMOST ALWAYS REACTIONS, NOT STRATEGY.

◆

THE TASK OF THE FIRST DAY IS SIMPLE: REMAIN STEADY. OBSERVE WITHOUT IMPROVISING. LET THE STRUCTURE EXIST WITHOUT CONSTANT CORRECTION. WHAT SURVIVES THE FIRST DAY DOES SO BECAUSE IT WAS ALLOWED TO BREATHE. RESISTING THE URGE TO “FIX EVERYTHING” IS THE FIRST TEST OF **DISCIPLINE**.



## THE SECOND WEEK

AFTER THE INITIAL NOISE FADES,  
SILENCE APPEARS.  
THIS SILENCE IS DECEPTIVE. IT FEELS  
LIKE STAGNATION, ABANDONMENT,  
OR FAILURE, BUT IT IS NONE OF  
THESE. IT IS THE SYSTEM SETTLING  
INTO ITS NATURAL STATE AFTER  
EXPOSURE.

MANY CREATORS FAIL HERE,  
MISTAKING QUIET FOR REJECTION.

◆  
THE ARCHITECT MUST LEARN TO  
DISTINGUISH ABSENCE OF  
ATTENTION FROM ABSENCE OF  
VALUE. THIS PERIOD IS NOT MEANT  
FOR EXPANSION, BUT FOR  
CONSOLIDATION.

THOSE WHO ENDURE THE QUIET  
STRENGTHEN THE **FOUNDATION**.



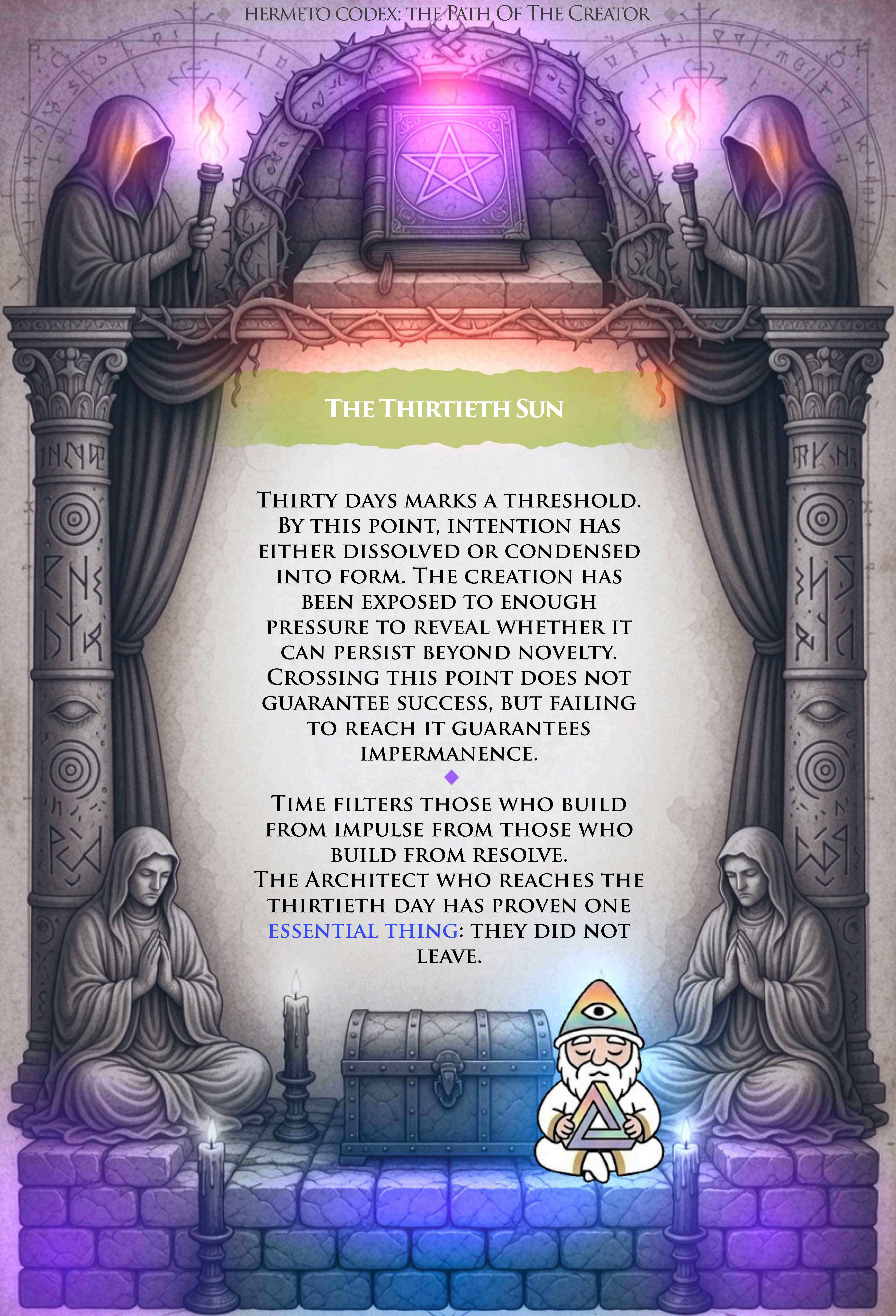
QUOD VIBRAT, MANET

## THE WEIGHT OF CONSISTENCY

CONSISTENCY IS HEAVIER THAN INTENSITY.  
SHOWING UP ONCE REQUIRES ENERGY.  
SHOWING UP EVERY DAY REQUIRES  
CHARACTER. THE ARCHITECT MUST  
MAINTAIN PRESENCE WITHOUT SPECTACLE,  
CONTINUING WORK EVEN WHEN NO  
IMMEDIATE FEEDBACK IS RETURNED.  
THIS IS WHERE INTENTION IS TESTED  
AGAINST FATIGUE.

◆  
ENTHUSIASM FADES, AND ONLY DISCIPLINE  
REMAINS. THE CREATION BEGINS TO  
MEASURE ITS MAKER.  
CONSISTENCY DOES NOT DEMAND  
VISIBILITY. IT DEMANDS **RELIABILITY**.





## THE THIRTIETH SUN

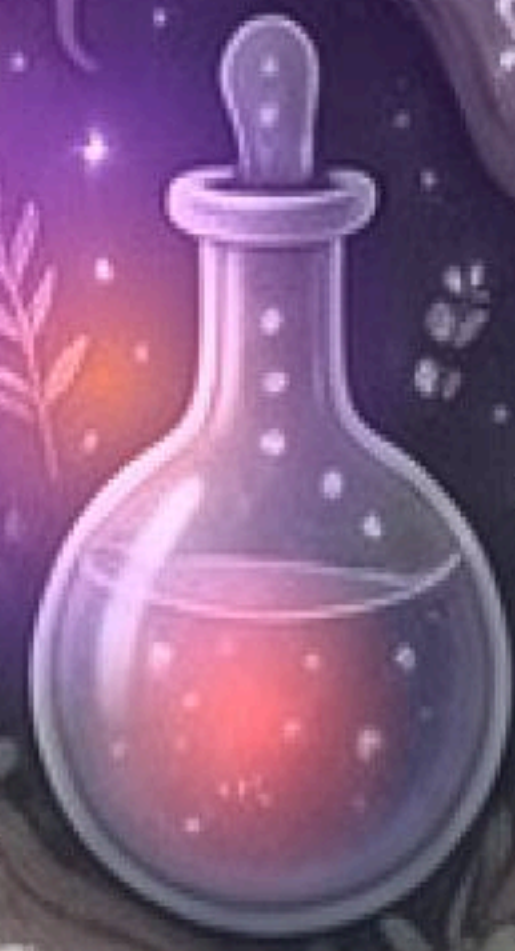
THIRTY DAYS MARKS A THRESHOLD. BY THIS POINT, INTENTION HAS EITHER DISSOLVED OR CONDENSED INTO FORM. THE CREATION HAS BEEN EXPOSED TO ENOUGH PRESSURE TO REVEAL WHETHER IT CAN PERSIST BEYOND NOVELTY. CROSSING THIS POINT DOES NOT GUARANTEE SUCCESS, BUT FAILING TO REACH IT GUARANTEES IMPERMANENCE.



TIME FILTERS THOSE WHO BUILD FROM IMPULSE FROM THOSE WHO BUILD FROM RESOLVE. THE ARCHITECT WHO REACHES THE THIRTIETH DAY HAS PROVEN ONE **ESSENTIAL THING**: THEY DID NOT LEAVE.



MENS FORMAM VOCAT



## PRESENCE WITHOUT NOISE

ENDURANCE DOES NOT REQUIRE  
CONSTANT SPEECH.

AFTER THE EARLY PHASE, THE  
ARCHITECT MUST LEARN TO REMAIN  
PRESENT WITHOUT FLOODING THE  
SYSTEM WITH REASSURANCE.  
OVERCOMMUNICATION CREATES  
DEPENDENCE. SILENCE, WHEN  
PAIRED WITH VISIBLE CONTINUITY,  
CREATES TRUST.



PRESENCE IS MEASURED BY  
PREDICTABILITY, NOT VOLUME. THE  
ARCHITECT WHO APPEARS ONLY TO  
REACT WEAKENS AUTHORITY. THE  
ONE WHO MAINTAINS RHYTHM  
STRENGTHENS IT.

**STABILITY** COMMUNICATES MORE  
THAN EXPLANATION.





INTENTIO PRIMUM IGNIS EST

## THE SACRIFICE OF IMMEDIATE REWARD

TIME DEMANDS SACRIFICE.  
OPPORTUNITIES TO EXTRACT VALUE  
APPEAR EARLY, OFTEN DISGUISED AS  
VALIDATION. THE ARCHITECT MUST  
RESIST THE URGE TO CLAIM  
VICTORY BEFORE THE STRUCTURE  
HAS MATURED.

◆  
DELAYING GRATIFICATION  
PRESERVES OPTIONALITY.  
PREMATURE REWARD NARROWS  
THE FUTURE AND CONVERTS  
POTENTIAL INTO REGRET.  
WHAT IS PRESERVED THROUGH  
RESTRAINT GAINS WEIGHT  
THROUGH **TIME**.





## HOLDING THE LINE ALONE

THERE WILL BE MOMENTS WHEN THE ARCHITECT STANDS ALONE. ATTENTION FADES. SUPPORT THINS. DOUBT GROWS LOUDER. THIS IS NOT A FAILURE OF THE CREATION, BUT A TEST OF RESOLVE. AT THIS STAGE, THE ARCHITECT MUST DRAW STABILITY FROM INTERNAL ALIGNMENT, NOT EXTERNAL AFFIRMATION.



THOSE WHO ENDURE SOLITUDE WITHOUT BITTERNESS DEVELOP AUTHORITY. THOSE WHO SEEK CONSTANT REASSURANCE FRACTURE UNDER PRESSURE. THE **LINE** IS HELD FIRST WITHIN.



# THE FORESTS

PLEROMA

SILVERWIND KEEP

MOONLIT GLADE

ZENITH SPRING

WHISPERING RUINS

HIDDEN TEMPLE

RIVERLIGHT



## FROM SURVIVAL TO CONTINUITY

AFTER ENDURANCE COMES CONTINUITY. THE CREATION NO LONGER DEPENDS ON DAILY DEFENSE. PATTERNS STABILIZE. THE COMMUNITY BEGINS TO SUSTAIN ITSELF. THE ARCHITECT SHIFTS FROM PROTECTING EXISTENCE TO GUIDING DIRECTION.

TIME HAS DONE ITS WORK.

◆  
WHAT REMAINS IS NO LONGER FRAGILE, BUT FORMATIVE.

THE LAW OF THE THIRTY DAYS DOES NOT PROMISE GROWTH. IT PROMISES FILTRATION. WHAT PASSES THROUGH TIME WITH INTEGRITY EARNS THE RIGHT TO **CONTINUE**.





E N D O F S C R O L L I V





◆ HERMETO CODEX ◆  
THE PATH OF THE CREATOR



SCROLL

V

THE ETERNAL  
GUARDIANSHIP



# HERMETO CODEX

THE PATH OF THE CREATOR



## SCROLL V

# THE ETERNAL GUARDIANSHIP

### INDEX

- II. THE VOW OF PERMANENCE.
- III. THE ARCHITECT AS LIVING REFERENCE.
- V. THE DISCIPLINE OF DAILY CARE.
- VI. EVOLUTION WITHOUT BETRAYAL.
- VIII. EXTENDING THE HABITAT.
- X. THE SHIELD OF THE COMMUNITY.
- XI. THE LEGACY OF PRESENCE.
- XIII. THE CONSTANT AMID CHANGE.

◆ THE RIDDLE IS THE FILTER,  
PATIENCE IS THE KEY. ◆

## THE VOW OF PERMANENCE

MOST CREATORS PREPARE FOR DEPARTURE. THE ARCHITECT PREPARES FOR CONTINUITY. PERMANENCE IS NOT STUBBORNNESS. IT IS A CONSCIOUS DECISION TO ACCEPT LONG RESPONSIBILITY OVER SHORT RELIEF. BY REMAINING, THE ARCHITECT DECLARES THAT THE CREATION IS NOT A TRANSACTION, BUT A COMMITMENT.

◆

THIS VOW IS NOT MADE PUBLICLY. IT IS MADE INTERNALLY. ONCE TAKEN, DECISIONS ARE NO LONGER GUIDED BY CONVENIENCE, BUT BY DURABILITY. THE QUESTION IS NO LONGER WHAT BENEFITS THE MOMENT, BUT WHAT PRESERVES COHERENCE OVER TIME. **PERMANENCE** CHANGES HOW EVERY ACTION IS WEIGHED.



## THE ARCHITECT AS LIVING REFERENCE

OVER TIME, THE ARCHITECT BECOMES A REFERENCE POINT. NOT THROUGH AUTHORITY, BUT THROUGH CONSISTENCY. THE WAY CHALLENGES ARE HANDLED, MISTAKES ARE ADDRESSED, AND LIMITS ARE RESPECTED TEACHES THE COMMUNITY HOW TO BEHAVE MORE EFFECTIVELY THAN ANY RULE.



THE ARCHITECT DOES NOT PERFORM PERFECTION. THEY DEMONSTRATE CORRECTION. WHEN ACTIONS ALIGN WITH PRINCIPLES REPEATEDLY, TRUST STABILIZES EVEN UNDER PRESSURE. A LIVING REFERENCE GUIDES WITHOUT **COMMANDING**.





INTENTIONEM ALLIGA, INFLATIO INEVITABILIS EST.

## THE DISCIPLINE OF DAILY CARE

GUARDIANSHIP IS  
PRACTICED DAILY.  
SMALL ACTS OF  
MAINTENANCE MATTER  
MORE THAN RARE DISPLAYS  
OF AMBITION. CHECKING  
SYSTEMS, RESPONDING  
WITH CLARITY,  
MAINTAINING RHYTHM.  
THESE ACTIONS  
COMPOUND QUIETLY.

◆  
NEGLECT DOES NOT  
ANNOUNCE ITSELF  
IMMEDIATELY. IT  
ACCUMULATES INVISIBLY  
UNTIL FRACTURE APPEARS.  
THE ARCHITECT MUST  
THEREFORE VALUE ROUTINE  
AS A PROTECTIVE FORCE,  
NOT A DISTRACTION FROM  
GROWTH.

WHAT IS CARED FOR  
REGULARLY **RESISTS** DECAY.



The background is a rich, magical illustration. At the top center, a glowing, multi-faceted purple orb with a central eye-like symbol is surrounded by intricate, glowing white geometric patterns. To its left is a glowing compass with a yellow center and red hands. To its right is a rolled-up scroll tied with a purple ribbon. Below these elements, a large, dark blue banner with a white border contains the title. The scene is framed by two stone pillars: the left one is dark purple with glowing yellow gemstones and green vines; the right one is light grey with a hanging lantern. At the bottom, a wizard with a white beard and a rainbow-colored pointed hat stands on a stone platform, holding a small object. The floor is made of grey stones, and there are glowing roots or energy lines extending from the platform. The overall color palette is dominated by purples, blues, and greys, with bright highlights from the glowing elements.

## EVOLUTION WITHOUT BETRAYAL

NO CREATION REMAINS STATIC.  
GUARDIANSHIP REQUIRES  
ADAPTATION WITHOUT  
DISTORTION. IMPROVEMENTS MUST  
STRENGTHEN THE ORIGINAL FORM,  
NOT REPLACE IT. CHANGE THAT  
CONTRADICTS THE FOUNDATION  
ERODES TRUST FASTER THAN  
STAGNATION.



THE ARCHITECT EVALUATES  
EVOLUTION CAREFULLY, ASKING  
WHETHER EACH ADJUSTMENT  
CLARIFIES PURPOSE OR  
INTRODUCES CONFUSION.  
GROWTH THAT DEMANDS BETRAYAL  
IS NOT GROWTH.  
CONTINUITY IS PRESERVED BY  
SELECTIVE CHANGE.



SISTE MUNDUM, IMA GEOMETRIAE EME.

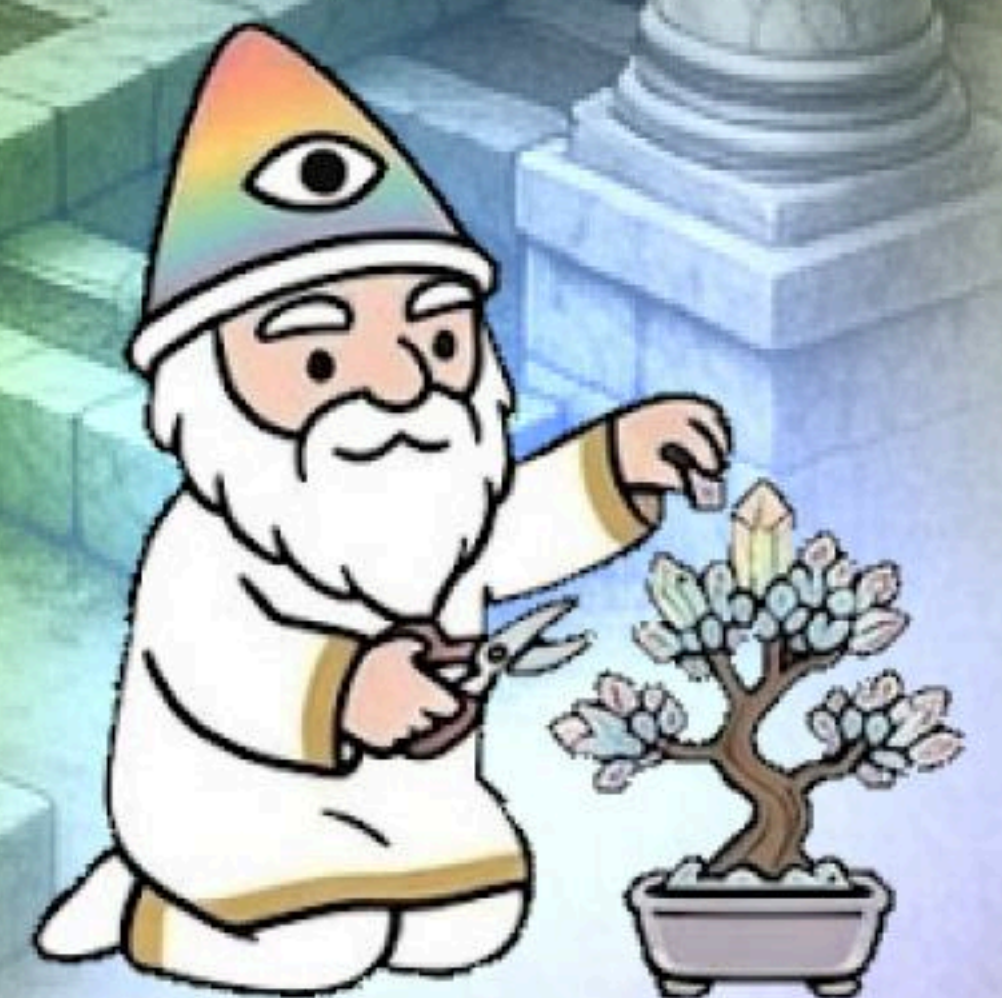
## EXTENDING THE HABITAT

A MATURE CREATION SEEKS NEW ENVIRONMENTS. UTILITIES, INTEGRATIONS, AND EXPANSIONS ARE NOT ESCAPES FROM THE CORE, BUT EXTENSIONS OF IT. EACH NEW DOMAIN MUST BE CAPABLE OF SUSTAINING THE ORIGINAL VALUES WITHOUT CONSTANT SUPERVISION.



THE ARCHITECT EXPANDS ONLY AFTER STABILITY IS DEMONSTRATED. NEW TERRITORY IS ADDED DELIBERATELY, NOT TO CHASE RELEVANCE, BUT TO SUPPORT LONGEVITY.

A CREATION THAT INHABITS MANY SPACES MUST **REMAIN** THE SAME ENTITY IN ALL OF THEM.





NUMERO FIDE, SPIRALIS SEMPERASCENDIT.



## THE SHIELD OF THE COMMUNITY

GUARDIANSHIP INCLUDES PROTECTION. EXTERNAL PRESSURES, MISINFORMATION, AND PREDATORY BEHAVIOR WILL TEST THE STRUCTURE. THE ARCHITECT DOES NOT RESPOND WITH AGGRESSION, BUT WITH CLARITY AND BOUNDARIES.

◆  
PROTECTION IS NOT CENSORSHIP. IT IS DISCERNMENT. HARMFUL INFLUENCE IS ADDRESSED DIRECTLY. NOISE IS IGNORED. THE COMMUNITY LEARNS WHAT IS TOLERATED BY OBSERVING WHAT IS DEFENDED. A **PROTECTED** STRUCTURE ALLOWS TRUST TO DEEPEN.



## THE LEGACY OF PRESENCE

PRESENCE LEAVES TRACES.  
OVER TIME, CONSISTENT  
BEHAVIOR CREATES A PATTERN  
THAT STABILIZES EVEN IN THE  
ARCHITECT'S ABSENCE. THIS  
PATTERN BECOMES CULTURAL  
MEMORY, GUIDING ACTION  
WITHOUT INSTRUCTION.



THE GOAL OF GUARDIANSHIP  
IS NOT DEPENDENCE, BUT  
RESILIENCE. WHEN THE  
CREATION CONTINUES  
COHERENTLY DURING  
MOMENTS OF REDUCED  
VISIBILITY, THE WORK HAS  
SUCCEEDED.

A LEGACY IS FORMED  
THROUGH PRESENCE  
SUSTAINED LONG ENOUGH TO  
**TEACH.**





# AETHER DUNES

PLEROMA

TWILIGHT WAY

SUNFALLEN  
CRYPT

MIRAGE OASIS

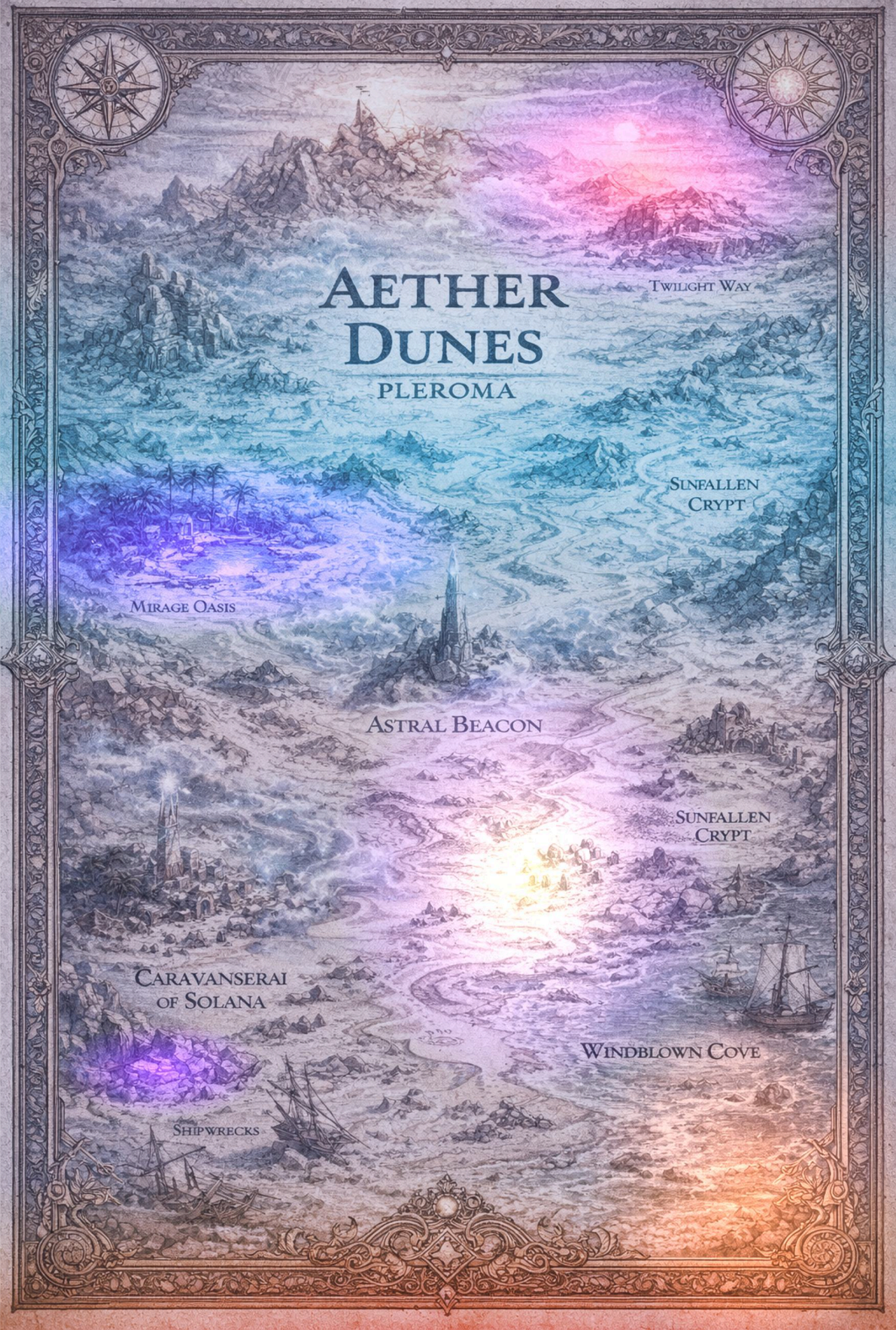
ASTRAL BEACON

SUNFALLEN  
CRYPT

CARAVANSERAI  
OF SOLANA

WINDBLOWN COVE

SHIPWRECKS



## THE CONSTANT AMID CHANGE

MARKETS FLUCTUATE.  
ATTENTION SHIFTS. CONTEXT  
EVOLVES.  
THE ARCHITECT WHO EMBODIES  
GUARDIANSHIP BECOMES A  
CONSTANT WITHIN THIS  
MOVEMENT. NOT IMMOVABLE,  
BUT RELIABLE. NOT LOUD, BUT  
STEADY.

◆  
THIS CONSTANCY ANCHORS  
OTHERS. IT REDUCES FEAR. IT  
ALLOWS LONG-TERM  
ALIGNMENT TO SURVIVE SHORT-  
TERM DISRUPTION.  
TO GUARD IS NOT TO FREEZE  
TIME.  
IT IS TO REMAIN COHERENT  
WHILE **TIME** MOVES.





E N D O F S C R O L L V





◆ HERMETO CODEX ◆  
THE PATH OF THE CREATOR



SCROLL

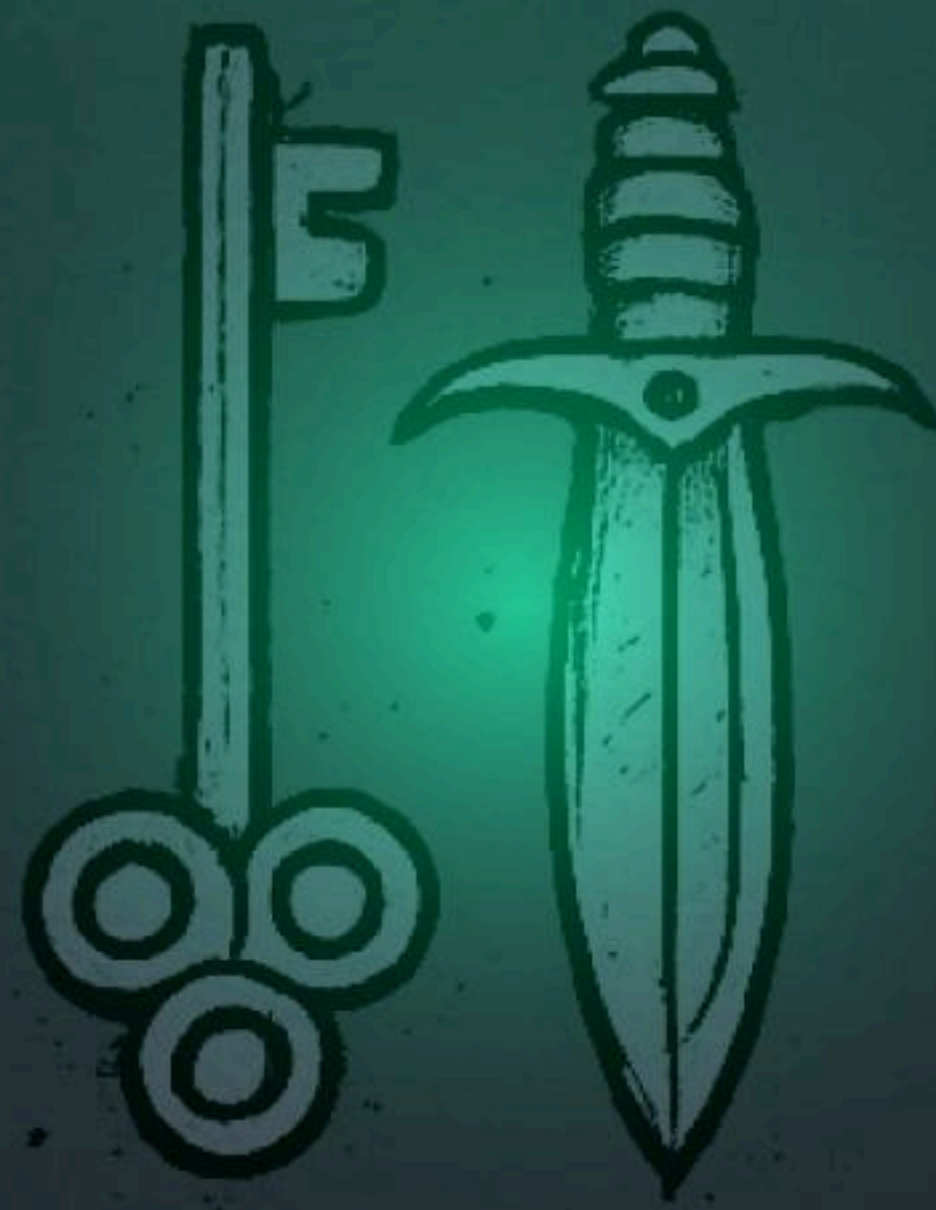
VI

◆ THE BURDEN  
OF POWER ◆



# HERMETO CODEX

THE PATH OF THE CREATOR



## SCROLL VI

### THE BURDEN OF POWER

#### INDEX

- II. WHEN ATTENTION BECOMES AUTHORITY.
- III. THE CONDENSATION OF INFLUENCE.
- V. THE COURT OF VOICES.
- VI. CONFLICT AS DIAGNOSIS.
- VIII. THE BOUNDARY BETWEEN GUIDANCE AND CONTROL
- X. THE ETHICS OF MODERATION.
- XI. THE SOLITUDE OF RESPONSIBILITY.
- XIII. POWER WITHOUT ATTACHMENT.

◆ POLARITY FLIPS WHEN YOUR  
CONVICTION HOLDS ◆

## WHEN ATTENTION BECOMES AUTHORITY

POWER DOES NOT BEGIN WITH CONTROL.  
IT BEGINS WITH ATTENTION.  
WHEN OTHERS LISTEN, REPEAT, OR WAIT FOR  
DIRECTION, AUTHORITY HAS ALREADY  
FORMED. THE ARCHITECT MUST RECOGNIZE  
THIS SHIFT EARLY, BECAUSE DENYING POWER  
DOES NOT REMOVE IT. IT ONLY MAKES IT  
UNCONSCIOUS.

◆  
AUTHORITY CARRIES WEIGHT WHETHER  
ACCEPTED OR NOT. ONCE ATTENTION  
CONCENTRATES, RESPONSIBILITY FOLLOWS.  
TO PRETEND OTHERWISE INVITES DISORDER.  
POWER ACKNOWLEDGED CAN BE  
DISCIPLINED.  
POWER DENIED BECOMES UNSTABLE.





## THE CONDENSATION OF INFLUENCE

INFLUENCE NATURALLY  
CONCENTRATES.  
EVEN IN SYSTEMS DESIGNED TO BE  
OPEN, GRAVITY FORMS AROUND  
CONSISTENCY, CLARITY, AND  
ENDURANCE. THIS IS NOT FAILURE.  
IT IS STRUCTURE EMERGING.  
THE ARCHITECT MUST RESIST THE  
ILLUSION THAT POWER CAN BE  
ELIMINATED.



IT CAN ONLY BE HANDLED WELL OR  
HANDLED POORLY. PRETENDING  
THAT ALL VOICES CARRY EQUAL  
RESPONSIBILITY WEAKENS DECISION-  
MAKING AND BLURS  
ACCOUNTABILITY.  
CLARITY ABOUT INFLUENCE  
PRESERVES ORDER.





TENDENTIAS NON SEQUOR, CURSUS CREO.

## THE COURT OF VOICES

AS POWER GROWS, VOICES MULTIPLY.  
ADVICE, CRITICISM, DEMANDS, AND  
FLATTERY ARRIVE TOGETHER, OFTEN  
INDISTINGUISHABLE. THE ARCHITECT  
MUST LEARN TO LISTEN WITHOUT OBEYING  
AND TO HEAR WITHOUT REACTING.  
NOT EVERY VOICE IS HOSTILE.



NOT EVERY FRIENDLY VOICE IS ALIGNED.  
DISCERNMENT BECOMES MORE IMPORTANT  
THAN OPENNESS. THE CREATION SUFFERS  
WHEN EVERY OPINION IS TREATED AS  
INSTRUCTION.  
LISTENING IS REQUIRED. SUBMISSION IS  
NOT.



## CONFLICT AS DIAGNOSIS

CONFLICT REVEALS STRUCTURE. DISAGREEMENT EXPOSES UNCLEAR RULES, UNRESOLVED VALUES, AND WEAK BOUNDARIES. SUPPRESSING CONFLICT HIDES SYMPTOMS. AMPLIFYING IT CREATES SPECTACLE. THE ARCHITECT'S TASK IS TO READ CONFLICT, NOT FEAR IT.

◆  
WHERE CONFLICT REPEATS, STRUCTURE IS MISSING. WHERE CONFLICT ESCALATES, RESTRAINT HAS FAILED. USED CORRECTLY, CONFLICT TEACHES WHERE REINFORCEMENT IS NEEDED. CONFLICT IGNORED RETURNS STRONGER.





TIMŌREM IN INGRESSUM TRĀNSMŪTŌ.



**THE BOUNDARY BETWEEN  
GUIDANCE AND CONTROL**

LEADERSHIP REQUIRES  
DISTINCTION.

GUIDANCE OFFERS DIRECTION  
WHILE PRESERVING AUTONOMY.  
CONTROL REPLACES JUDGMENT  
WITH DEPENDENCE. THE  
DIFFERENCE LIES IN INTENTION  
AND FREQUENCY.

THE ARCHITECT INTERVENES TO  
PRESERVE COHERENCE, NOT TO  
ENFORCE PREFERENCE.

WHEN INTERVENTION BECOMES  
HABITUAL, POWER TURNS  
INWARD AND CORRODES TRUST.  
AUTHORITY THAT CANNOT  
WITHDRAW IS ALREADY ABUSIVE.





ŪNIVERSUM MENTALE EST, SIC ET HAEC CHARTA.



## THE ETHICS OF MODERATION

MODERATION SHAPES CULTURE.  
WHAT IS ALLOWED GROWS. WHAT  
IS TOLERATED PERSISTS. WHAT IS  
CLEARLY REFUSED DISSOLVES. THE  
ARCHITECT MUST MODERATE  
BEHAVIOR, NOT OPINION, AND  
ACTION, NOT THOUGHT.  
BOUNDARIES PROTECT WITHOUT  
SILENCING.



ABSENCE OF BOUNDARIES INVITES  
DOMINATION BY THE LOUDEST,  
NOT THE WISEST. CONSISTENT  
MODERATION TEACHES THE SYSTEM  
HOW TO REGULATE ITSELF.  
JUSTICE APPLIED UNEVENLY  
DESTROYS LEGITIMACY.





## THE SOLITUDE OF RESPONSIBILITY

POWER ISOLATES.  
DECISIONS MADE AT SCALE CANNOT BE  
SHARED EQUALLY. RESPONSIBILITY  
CONCENTRATES, AND WITH IT,  
SOLITUDE. SEEKING CONSTANT  
VALIDATION WEAKENS JUDGMENT.

◆  
AVOIDING SOLITUDE WEAKENS RESOLVE.  
THE ARCHITECT MUST LEARN TO CARRY  
RESPONSIBILITY WITHOUT RESENTMENT.  
ISOLATION IS NOT PUNISHMENT. IT IS  
THE COST OF CLARITY.  
THOSE WHO CANNOT ENDURE  
SOLITUDE SHOULD NOT HOLD  
AUTHORITY.



# THE SILENT PLATEAUS

WHISPERING SPIRES

THE ECHOING CHASM

RESONANT GROVE

CITADEL OF STILLNESS

THE QUIET PATHWAYS

THE QUIET PATHWAYS

*Inner  
Sea of Mind*

ALTAR OF ABSENCE



## POWER WITHOUT ATTACHMENT

POWER IS TEMPORARY.  
RESPONSIBILITY IS ONGOING.  
THE ARCHITECT MUST HOLD  
INFLUENCE WITHOUT  
IDENTIFYING WITH IT. WHEN  
AUTHORITY BECOMES IDENTITY,  
CORRUPTION FOLLOWS. WHEN  
AUTHORITY IS TREATED AS  
FUNCTION, IT REMAINS USEFUL.  
THE HIGHEST DISCIPLINE IS TO  
ACT DECISIVELY WITHOUT  
PERSONAL INVESTMENT IN  
DOMINANCE.

◆  
POWER HELD LIGHTLY SERVES  
THE SYSTEM. POWER CLUTCHED  
TIGHTLY SERVES THE SELF.  
ONLY DETACHMENT PRESERVES  
INTEGRITY.





E N D O F S C R O L L V I





◆ **HERMETO CODEX** ◆  
THE PATH OF THE CREATOR



**SCROLL**

**VII**

◆—————◆  
**THE LIVING  
CONTINUUM**  
◆—————◆



# HERMETO CODEX

THE PATH OF THE CREATOR



## SCROLL VII

### THE LIVING CONTINUUM

#### INDEX

- II. THE LAW OF CONTINUITY.
- III. RENEWAL WITHOUT RUPTURE.
- V. THE TRANSMISSION OF UNDERSTANDING.
- VI. THE MULTIPLICATION OF ARCHITECTS.
- VIII. THE LIVING MYTH.
- X. PRESENCE WITHOUT CENTRALITY.
- XI. RENEWAL ACROSS GENERATIONS.
- XIII. THE CLOSED CIRCLE.

◆ BUILD IN SILENCE,  
THE CHAIN REMEMBERS. ◆



## THE LAW OF CONTINUITY

CREATION IS NOT A SINGLE ACT. IT IS A SUSTAINED CONDITION.

WHAT BEGINS WITH INTENTION MUST BE MAINTAINED THROUGH REPETITION, CARE, AND RENEWAL. CONTINUITY IS NOT ACHIEVED BY RESISTING CHANGE, BUT BY PRESERVING COHERENCE WHILE CHANGE OCCURS.

THE ARCHITECT UNDERSTANDS THAT ENDINGS ARE OFTEN FAILURES OF ATTENTION, NOT INEVITABILITIES. WHAT IS TENDED REMAINS PRESENT. WHAT IS IGNORED DISSOLVES. CONTINUITY IS AN ACTIVE DISCIPLINE.



## RENEWAL WITHOUT RUPTURE

EVERY LIVING SYSTEM MUST  
REFRESH ITS MEANING.  
RENEWAL DOES NOT REQUIRE  
ABANDONING FORM. IT REQUIRES  
REMOVING STAGNATION. WHEN  
SYMBOLS LOSE CLARITY, WHEN  
LANGUAGE DULLS, WHEN RITUAL  
BECOMES HABIT, ATTENTION MUST  
RETURN.

THE ARCHITECT RENEWS BY  
REFINING, NOT REPLACING.  
ADJUSTMENTS ARE MADE TO  
RESTORE ALIGNMENT, NOT TO  
CHASE NOVELTY. CHANGE THAT  
BREAKS CONTINUITY IS NOT  
RENEWAL, IT IS RUPTURE.  
RENEWAL PRESERVES IDENTITY BY  
SHARPENING IT.



CRUMENA MEA ETHICAM SEQUITUR, NON AFFECTUS.

## THE TRANSMISSION OF UNDERSTANDING

WHAT CANNOT BE  
TRANSMITTED WILL NOT  
SURVIVE.

THE ARCHITECT MUST ENSURE  
THAT KNOWLEDGE, VALUES, AND  
PRACTICES ARE SHARED IN A  
FORM OTHERS CAN CARRY.  
AUTHORITY IS NOT  
TRANSMITTED.

UNDERSTANDING IS.  
TEACHING OCCURS THROUGH  
EXPLANATION, REPETITION, AND  
EXAMPLE. SILENCE WITHOUT  
GUIDANCE CREATES  
MYTHOLOGY. GUIDANCE  
WITHOUT AUTONOMY CREATES  
DEPENDENCE.

TRANSMISSION SUCCEEDS  
WHEN OTHERS ACT CORRECTLY  
WITHOUT INSTRUCTION.

## THE MULTIPLICATION OF ARCHITECTS

AT MATURITY, CREATION NO LONGER DEPENDS ON A SINGLE WILL. OTHERS BEGIN TO ACT WITH COHERENCE, NOT IMITATION. THEY MAKE DECISIONS ALIGNED WITH THE STRUCTURE, NOT BECAUSE THEY ARE TOLD TO, BUT BECAUSE THEY UNDERSTAND WHY.

◆  
THIS IS NOT DECENTRALIZATION AS IDEOLOGY. IT IS DISTRIBUTION OF RESPONSIBILITY THROUGH SHARED COMPREHENSION. WHEN MANY CAN ACT AS ONE, CONTINUITY BECOMES **RESILIENT**.





CUM INTENTIONE CUDO, CUM RHYTHMO PUBLICO.



## THE LIVING MYTH

OVER TIME, THE CREATION  
BECOMES A REFERENCE.  
STORIES EMERGE, NOT AS  
MARKETING, BUT AS MEMORY.  
THESE NARRATIVES ORIENT NEW  
PARTICIPANTS AND REMIND  
OLDER ONES WHY THE  
STRUCTURE EXISTS.



THE ARCHITECT DOES NOT  
CONTROL THE MYTH. THEY  
ENSURE IT REMAINS TRUTHFUL.  
DISTORTION BEGINS WHEN  
EXAGGERATION REPLACES  
ACCURACY.  
A LIVING MYTH GUIDES  
BEHAVIOR **WITHOUT** COMMAND.





CREATIO DISCIPLINA EST, LARVAM INSPIRATIONIS GERENS.

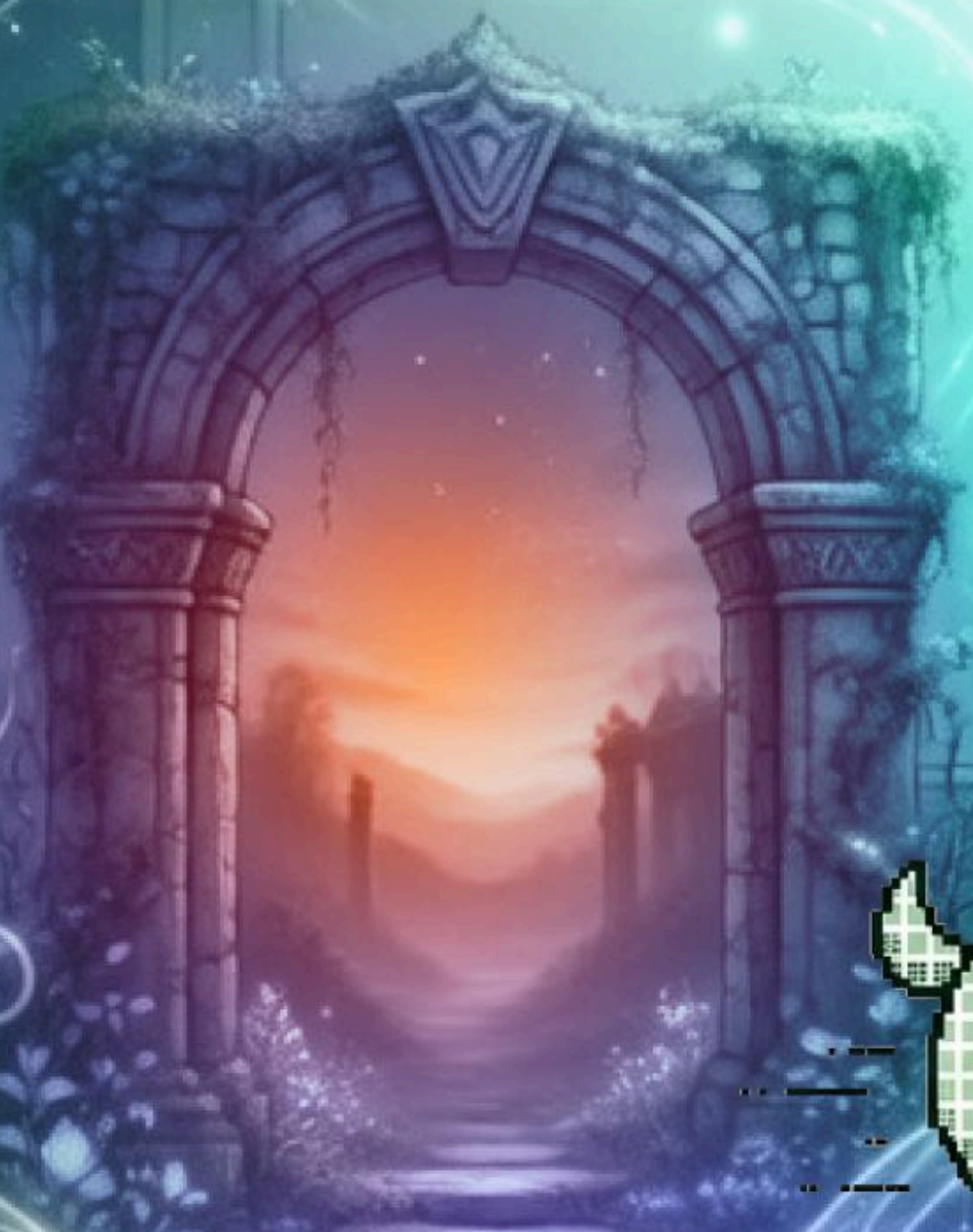


## PRESENCE WITHOUT CENTRALITY

CONTINUITY DOES NOT REQUIRE  
CONSTANT CENTRAL ACTION.  
THE ARCHITECT REMAINS PRESENT,  
BUT NOT DOMINANT. GUIDANCE  
BECOMES SUBTLE. INTERVENTION  
BECOMES RARE. STABILITY REPLACES  
URGENCY.



THIS SHIFT IS NOT WITHDRAWAL.  
IT IS MATURATION. THE STRUCTURE  
NO LONGER NEEDS CONSTANT  
CORRECTION BECAUSE PRINCIPLES  
HAVE BEEN INTERNALIZED.  
PRESENCE WITHOUT CENTRALITY  
ALLOWS THE SYSTEM TO **BREATHE**.





## RENEWAL ACROSS GENERATIONS

TIME INTRODUCES NEW PARTICIPANTS WITH DIFFERENT CONTEXTS. CONTINUITY REQUIRES TRANSLATING VALUES WITHOUT DILUTING THEM. LANGUAGE MAY CHANGE. TOOLS MAY EVOLVE. PRINCIPLES MUST REMAIN INTACT.



THE ARCHITECT PROTECTS THE CORE WHILE ALLOWING EXPRESSION TO ADAPT. REFUSING TRANSLATION FREEZES THE SYSTEM. ALLOWING DISTORTION DISSOLVES IT. CONTINUITY LIVES IN CAREFUL **TRANSMISSION** ACROSS TIME.



# TEMPLE OF CORRESPONDENCE

THE ARCHIVES  
OF AKASHA



GROVE OF  
SYMBIOSIS



THE HALL OF  
ECHOES

TEMPLE OF  
CORRESPONDENCE

PATH OF  
PILGRIMS

THE SILENT SHORE



## THE CLOSED CIRCLE

THE PATH RETURNS TO ITS ORIGIN. CREATION FEEDS CREATION. WHAT WAS LEARNED BECOMES PREPARATION FOR THE NEXT ACT. THE ARCHITECT REMAINS, NOT AS ORIGINATOR, BUT AS PARTICIPANT WITHIN A LIVING PATTERN.

THE CIRCLE DOES NOT CLOSE THROUGH DISAPPEARANCE, BUT THROUGH INTEGRATION. THE WORK CONTINUES BECAUSE IT HAS LEARNED HOW TO SUSTAIN ITSELF. WHAT ENDURES DOES NOT CONCLUDE. IT **CONTINUES**.



E N D O F S C R O L L V I I





HERMETO.FUN



X.COM/HERMETOSOL



TIKTOK.COM/HERMETOSOL



YOUTUBE.COM/HERMETOSOL



TO ALL OF YOU  
THANK YOU  
ARCHITECTS

